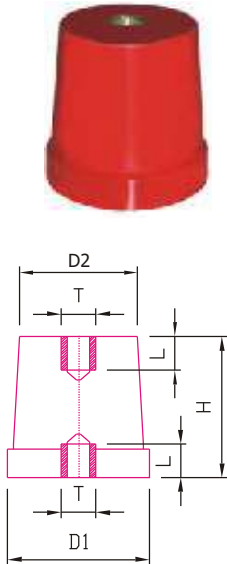


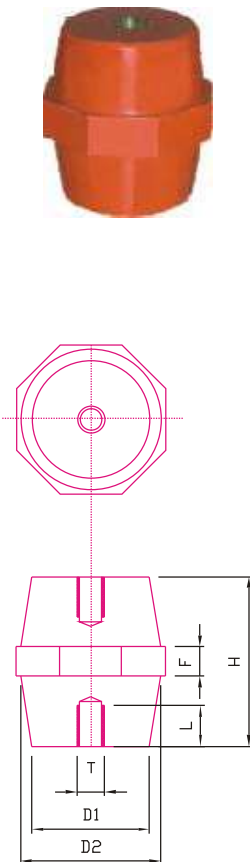
STANDOFF INSULATORS

Conical



CODE NO	D1	D2	H	T	L
LT0-6	25	21	25	M6	7
LT1-6	30	21	30	M6	9
LT1-8	33	26	30	M8	7
LT2-6	30	22	35	M6	9
LT2-8	30	22	35	M8	9
LT3-8	40	33	40	M8	12
LT3-10	40	33	40	M10	11
LT4-10	50	41	50	M10	14
LT4-12	50	41	50	M12	14
LT5-10	50	40	60	M10	17
LT5-12	50	40	60	M12	17
LT5A-10	60	44	60	M10	17
LT5A-12	60	44	60	M12	17
LT7-10	55	46	80	M10	22
LT7-12	55	46	80	M12	22

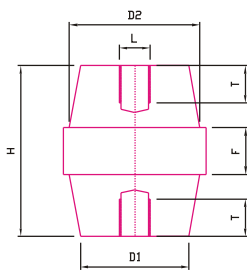
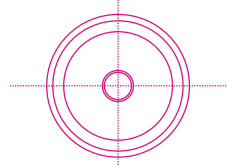
OCTAGONAL



CODE NO	D1	D2	H	F	T	L
OC00-4	15	18	20	6	M4	5
OC01-6	18	21	25	7	M6	7
OC02-6	22	28	30	9	M6	9
OC02-8	22	28	30	9	M8	7
OC02A-10	26	30	30	6	M10	9
OC03-6	25	30	35	9	M6	9
OC03-8	25	30	35	9	M8	9
OC03A-8	34	38	35	9	M8	11
OC03A-10	34	38	35	9	M10	11
OC04-8	35	39	40	8	M8	12
OC04-10	35	39	40	8	M10	11
OC04A-6	20	30	40	8	M6	12
OC05-8	33	38	45	11	M8	14
OC05-10	33	38	45	11	M10	14
OC05A-8	42	47	45	11	M8	14
OC05A-10	42	47	45	11	M10	14
OC06-10	33	40	50	11	M10	15
OC06-12	33	40	50	11	M12	15
OC07-10	44	52	55	11	M10	17
OC07-12	44	52	55	11	M12	17
OC08-10	42	50	60	11	M10	22
OC08-12	42	50	60	11	M12	22
OC09-10	39	47	70	11	M10	22
OC09-12	39	47	70	11	M12	22
OC10-10	52	62	75	13	M10	22
OC10-12	52	62	75	13	M12	22
OC11-10	30	41	80	10	M10	22

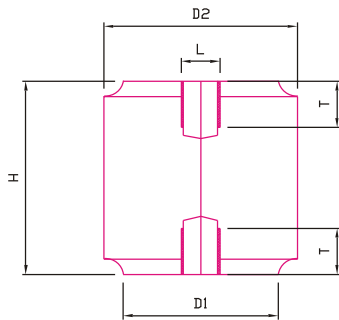
STANDOFF INSULATORS

DRUM



CODE NO	D1	D2	H	F	T	L
OW0A-6	25	31	25	8	M6	7
OW0A-8	25	31	25	8	M8	7
OW0B-6	25	33	30	10	M6	9
OW0B-8	25	33	30	10	M8	7
OW1-6	27	32	35	8	M6	9
OW1-8	27	32	35	8	M8	9
OW3-8	29	32	51	13	M8	14
OW3A-10	35	42	55	15	M10	14
OW4-10	34	40	64	12	M10	17
OW4-12	34	40	64	12	M12	17
OW5-10	35	39	65	12	M10	17
OW5-12	35	39	65	12	M12	17
OW6-10	39	47	76	15	M10	22
OW6-12	39	47	76	15	M12	22

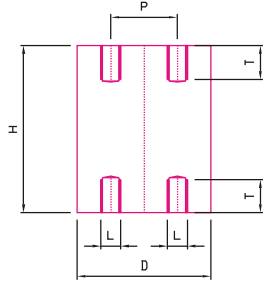
CYLINDRICAL



CODE NO	D1	D2	H	I	T
ST1-6	22	25	25	M6	7
ST2-6	23	30	30	M6	9
ST2-8	23	30	30	M8	7
ST3-6	30	40	40	M6	12
ST3-8	30	40	40	M8	12
ST3-10	30	40	40	M10	11
ST4-10	40	50	50	M10	15
ST4-12	40	50	50	M12	15
ST5-10	40	50	60	M10	22
ST5-12	40	50	60	M12	22
ST5A-10	50	60	60	M10	22
ST5A-12	50	60	60	M12	22
ST6-10	50	60	80	M12	22
ST6-12	50	60	80	M12	22

STANDOFF INSULATORS

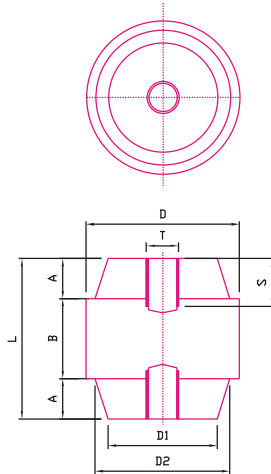
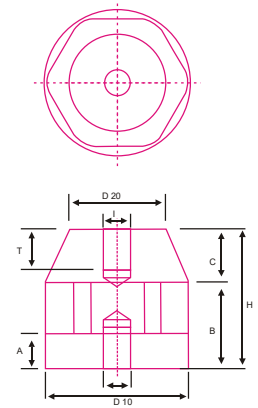
CYLINDRICAL



CODE NO	D	P	H	I	T
CYL1-6	40	20	50	M6	11
CYL1-8	40	20	50	M8	11
CYL2-8	60	25	60	M6	11
CYL3-6	40	21	70	M6	11
CYL3-8	40	21	70	M8	11



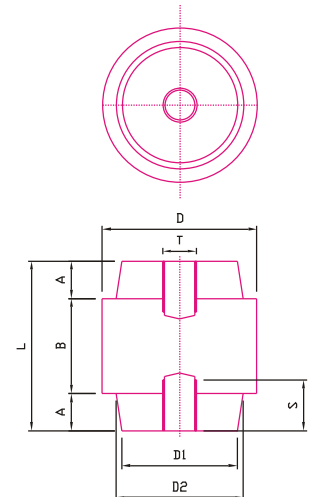
CODE NO	D10	D20	H	A	B	C	I	T
CYN1-6	26	16	25	8	21	5	M6	8
CYN1-8	26	16	25	8	21	5	M8	8
CYN2-6	30	24	30	10	20	10	M6	10
CYN2-8	30	24	30	10	20	10	M8	10
CYN3-8	41	28	35	10	21	14	M8	10
CYN3-10	41	28	35	10	21	14	M10	10
CYN4-8	41	28	40	10	25	15	M8	12
CYN4-10	41	28	40	10	25	15	M10	12



CODE NO	L	A	B	D	D1	D2	S	T
SI-061-10	30	11	8	46	34	37.5	9	M10
SI-062-10	35	11	13	46	34	37.5	11	M10
SI-063-10	40	11	18	46	34	37.5	12	M10
SI-064-10	45	11	23	46	34	37.5	14	M10
SI-065-10	50	11	28	46	34	37.5	15	M10

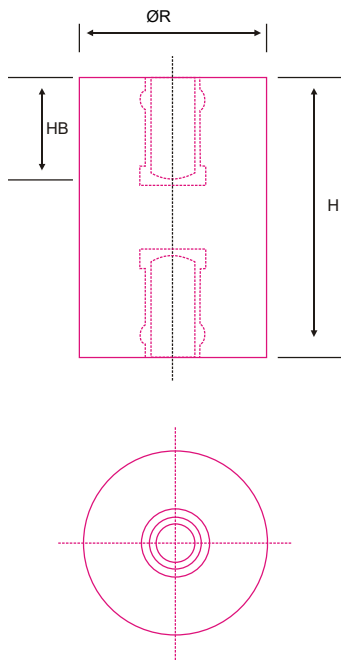


CODE NO	L	A	B	D	D1	D2	S	T
SI-53-8	35	13	10	48	36	44	11	M8
SI-53-10	35	13	10	48	36	44	11	M10
SI-54-8	40	13	15	46	35	41	12	M8
SI-54-10	40	13	15	46	35	41	12	M10
SI-055-10	50	13	25	48	34	42	15	M10
SI-055-12	50	13	25	48	34	42	15	M12



STANDOFF INSULATORS

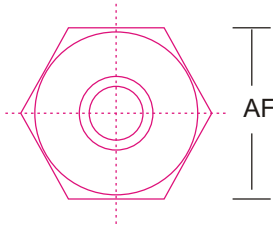
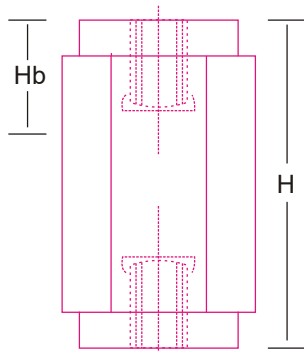
FULL HEX



CODE NO	H	I	R	HB
CY2225	25	M6	22	10
CY2225	25	M8	22	10
CY2630	30	M6	26	10
CY2630	30	M6	26	10
CY3030	30	M6	30	10
CY3030	30	M8	30	12
CY3030	30	M10	30	12
CY3040	40	M6	30	15
CY3040	40	M8	30	15
CY3040	40	M10	30	15
CY4040	40	M8	40	15
CY4040	40	M10	40	15
CY3050	50	M6	30	20
CY3050	50	M8	30	20
CY3050	50	M10	30	20
CY4050	50	M8	40	20
CY4050	50	M10	40	20
CY5050	50	M10	50	20
CY5050	50	M12	50	20
CY2660	60	M6	26	20
CY2660	60	M8	26	20
CY2660	60	M10	26	20
CY3060	60	M6	30	20
CY3060	60	M8	30	20
CY3060	60	M10	30	20
CY5060	60	M10	50	20
CY5060	60	M12	50	20
CY6060	60	M10	60	20
CY6060	60	M12	60	20
CY2663	63	M6	26	20
CY2663	63	M8	26	20
CY2663	63	M10	26	20

STANDOFF INSULATORS

FULL HEX



Hex Face to Face (A/F 14mm)

Insulator with M4 Inserts

CODE NO	H	HB
14HH 415	15	5
14HH 420	20	7
14HH 425	25	10

Insulator with M5 Inserts

CODE NO	H	HB
14HH 415	15	5
14HH 420	20	7
14HH 425	25	10

Hex Face to Face (A/F 20mm)

Insulator with M5 Inserts

CODE NO	H	HB
20HH 520	20	7
20HH 525	25	10
20HH 530	30	10
20HH 535	35	10
20HH 540	40	15
20HH 545	45	15
20HH 550	50	20
20HH 555	55	20
20HH 560	60	20

Insulator with M6 Inserts

CODE NO	H	HB
20HH 620	20	7
20HH 625	25	10
20HH 630	30	10
20HH 635	35	10
20HH 640	40	15
20HH 645	45	15
20HH 650	50	20
20HH 655	55	20
20HH 660	60	20

Hex Face to Face (A/F 25mm)

Insulator with M6 Inserts

CODE NO	H	HB
25HH 625	25	10
25HH 630	30	10
25HH 635	35	10
25HH 640	40	15
25HH 645	45	15
25HH 650	50	20
25HH 655	55	20
25HH 660	60	20

Insulator with M8 Inserts

CODE NO	H	HB
25HH 825	25	10
25HH 830	30	10
25HH 835	35	10
25HH 840	40	15
25HH 845	45	15
25HH 850	50	20
25HH 855	55	20
25HH 860	60	20

Hex Face to Face (A/F 35mm)

Insulator with M8 Inserts

CODE NO	H	HB
35HH 830	30	12
35HH 835	35	12
35HH 840	40	15
35HH 845	45	15
35HH 850	50	20
35HH 855	55	20
35HH 860	60	20

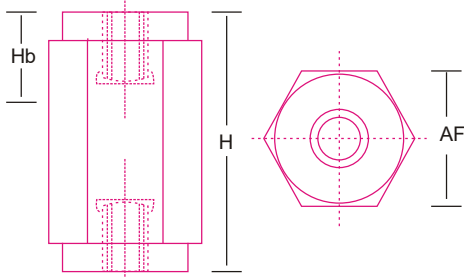
Insulator with M10 Inserts

CODE NO	H	HB
35HH 1030	30	12
35HH 1035	35	12
35HH 1040	40	15
35HH 1045	45	15
35HH 1050	50	20
35HH 1055	55	20
35HH 1060	60	20

STANDOFF INSULATORS

FULL HEX

Hex Face to Face (A/F 45mm)



Insulator with M10 Inserts

CODE NO	H	HB
45HH 1035	35	12
45HH 1040	40	15
45HH 1045	45	15
45HH 1050	50	20
45HH 1055	55	20
45HH 1060	60	20
45HH 1070	70	25
45HH 1080	80	30
45HH 1090	90	30
45HH 10100	100	30

Insulator with M12 Inserts

CODE NO	H	HB
45HH 1235	35	12
45HH 1240	40	15
45HH 1245	45	15
45HH 1250	50	20
45HH 1255	55	20
45HH 1260	60	20
45HH 1270	70	25
45HH 1280	80	30
45HH 1290	90	30
45HH 12100	100	30

ROUND HEX

Round & Hex Face to Face (A/F 20mm)



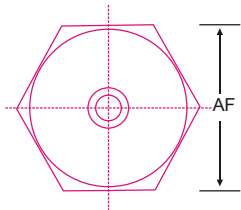
Insulator with M5 Inserts

CODE NO	H	HB
20RH 520	20	7
20RH 525	25	10

Insulator with M6 Inserts

CODE NO	H	HB
20RH 620	20	7
20RH 625	25	10

Round & Hex Face to Face (A/F 30mm)



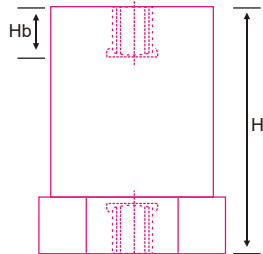
Insulator with M8 Inserts

CODE NO	H	HB
30 RH 830	30	12
30 RH 835	35	12
30 RH 840	40	15

Insulator with M10 Inserts

CODE NO	H	HB
30 RH 1030	30	12
30 RH 1035	35	12
30 RH 1040	40	15

Round & Hex Face to Face (A/F 40mm)



Insulator with M10 Inserts

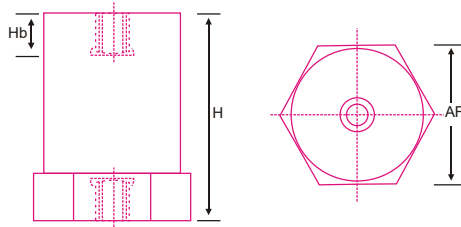
CODE NO	H	HB
40 RH 1030	30	12
40 RH 1035	35	12
40 RH 1040	40	15
40 RH 1045	45	15
40 RH 1050	50	20
40 RH 1055	55	20
40 RH 1060	60	20
40 RH 1065	65	25
40 RH 1070	70	25

Insulator with M12 Inserts

CODE NO	H	HB
40 RH 1240	40	15
40 RH 1245	45	15
40 RH 1250	50	20
40 RH 1255	55	20
40 RH 1260	60	20
40 RH 1265	65	20
40 RH 1270	70	20

STANDOFF INSULATORS

ROUND HEX



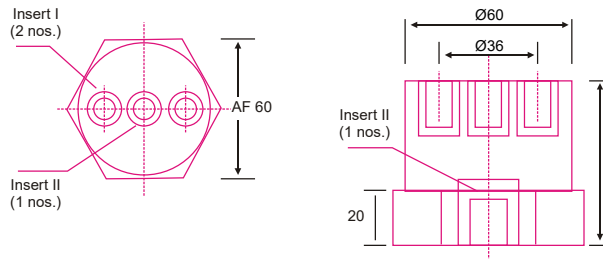
Round & Hex Face to Face (A/F 60mm)

Insulator with M12 Inserts

CODE NO	H	HB
60RH 1240	40	15
60RH 1250	50	20
60RH 1260	60	20
60RH 1270	70	20
60RH 1280	80	30

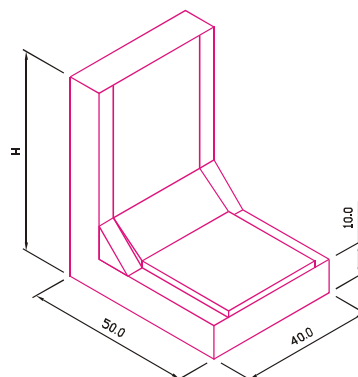
Insulator with M16 Inserts

CODE NO	H	HB
60RH 1650	50	20
60RH 1660	60	20
60RH 1670	70	20
60RH 1680	80	30



CODE NO	H	INSERT I (2 Nos.)	INSERT II (1 No.)	INSERT III (1 No.)
HD60RH40	40	M 8 X 15	M 10 X 15	M 12 X 15
HD60RH50	50	M 8 X 20	M 10 X 20	M 12 X 20
HD60RH60	60	M 8 X 20	M 10 X 20	M 12 X 20
HD60RH70	70	M 8 X 20	M 10 X 20	M 12 X 20
HD60RH80	80	M 8 X 20	M 10 X 30	M 12 X 30

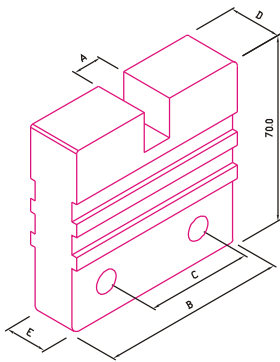
L SUPPORT



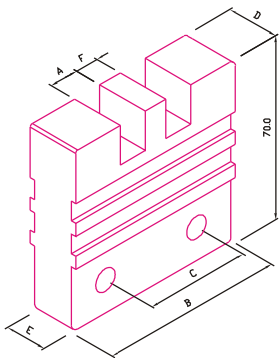
CODE NO	Height in mm
L 60	60
L 85	85
L 100	100
L 125	125

INSULATORS FOR VERTICAL BUSBARS

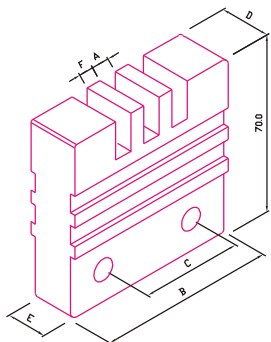
FINGER TYPE BUSBAR SUPPORT



CODE NO	DESCRIPTION	A	B	C	D	E	F
106S	6mmx1run	7	50	22	14	10	-
110S	10mmx1run	11	50	22	14	10	-
112S	12mmx1run	13.7	50	22	14	10	-
106W	6mmx1run	7	60	32	14	10	-
110W	10mmx1run	11	60	32	14	10	-
112W	12mmx1run	13.7	60	32	14	10	-
106K	6mmx1run	7	70	40	20	16	-
110K	10mmx1run	11	70	40	20	16	-
112K	12mmx1run	13.7	70	40	20	16	-



CODE NO	DESCRIPTION	A	B	C	D	E	F
206W	6mmx2runs	7	60	32	14	10	5.8
210W	10mmx2runs	11	60	32	14	10	9
212W	12mmx2runs	13.7	60	32	14	10	11.9
206K	6mmx2runs	7	70	40	20	16	5.8
210K	10mmx2runs	11	70	40	20	16	9
212K	12mmx2runs	13.7	70	40	20	16	11.9

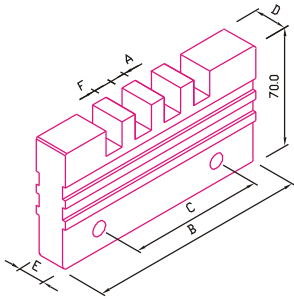


CODE NO	DESCRIPTION	A	B	C	D	E	F
306W	6mmx3runs	7	70	32	14	10	5.8
310W	10mmx3runs	11	80	50	14	10	9
312W	12mmx3runs	13.7	90	50	15	11	11.9
306K	6mmx3runs	7	70	40	20	16	5.8
310K	10mmx3runs	11	100	50	20	16	9
312K	12mmx3runs	13.7	100	50	20	16	11.9

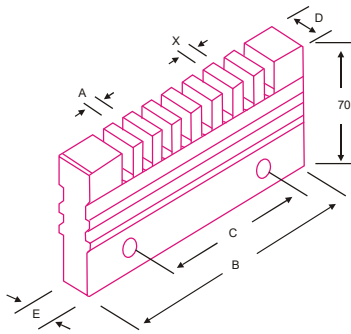
1. Mounting Hole $\phi 8.5\text{mm}$ 2. Depth of slot 15mm

INSULATORS FOR VERTICAL BUSBARS

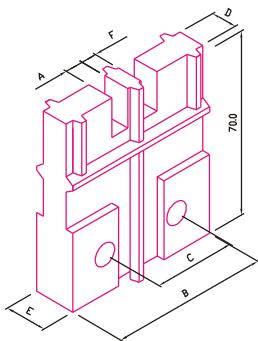
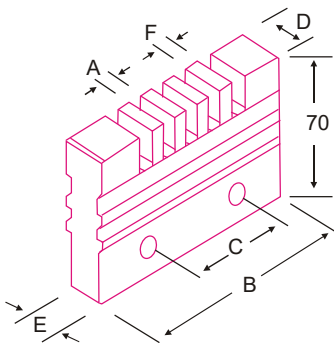
FINGER TYPE BUSBAR SUPPORT



CODE NO	DESCRIPTION	A	B	C	D	E	F
406W	6mmx4runs	7.2	80	50	14	10	5.8
406K	6mmx4runs	7.2	100	50	20	16	5.8
410K	10mmx4runs	11.7	130	80	20	16	9
412K	12mmx4runs	13.7	130	80	20	16	11.9



CODE NO	DESCRIPTION	A	B	C	D	E	F
506K	6mmx5runs	7	100	50	20	16	-
510K	10mmx5runs	11	160	55	25	20	9
512K	12mmx5runs	13	160	55	25	20	11
606K	6mmx6runs	11	100	50	20	16	-
610K	10mmx6runs	11	160	55/55	25	20	9
612K	12mmx6runs	13	160	55/55	25	20	11
806K	6mmx8runs	13.7	130	80	25	20	-

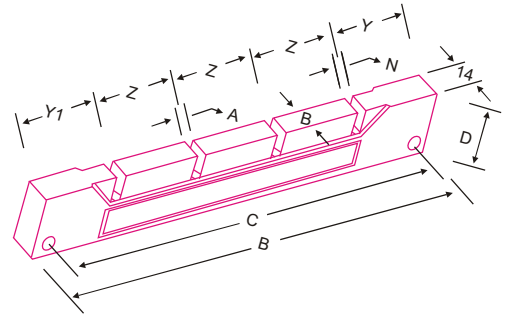


CODE NO	DESCRIPTION	A	B	C	D	E	F
PL106	6mmx1run	7	60	32	10	16	-
PL110	10mmx1run	11	60	32	10	16	-
PL112	12mmx1run	13.7	60	32	10	20	-
PL206	6mmx2runs	7	60	32	10	16	5.8
PL210	10mmx2runs	11	60	32	10	16	9
PL212	12mmx2runs	13.7	70	32	10	20	11.9
PL306	6mmx3runs	7	70	32	10	20	5.8

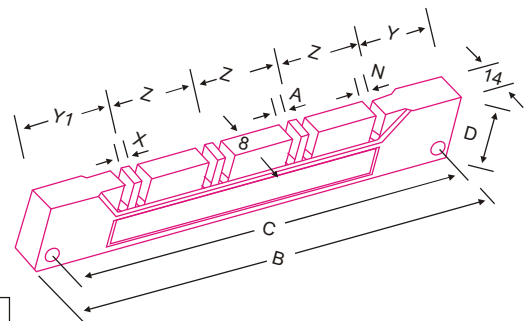
1. Mounting Hole $\phi 8.5\text{mm}$ 2. Depth of slot 15mm

INSULATORS FOR VERTICAL BUSBARS

FINGER TYPE BUSBAR SUPPORT



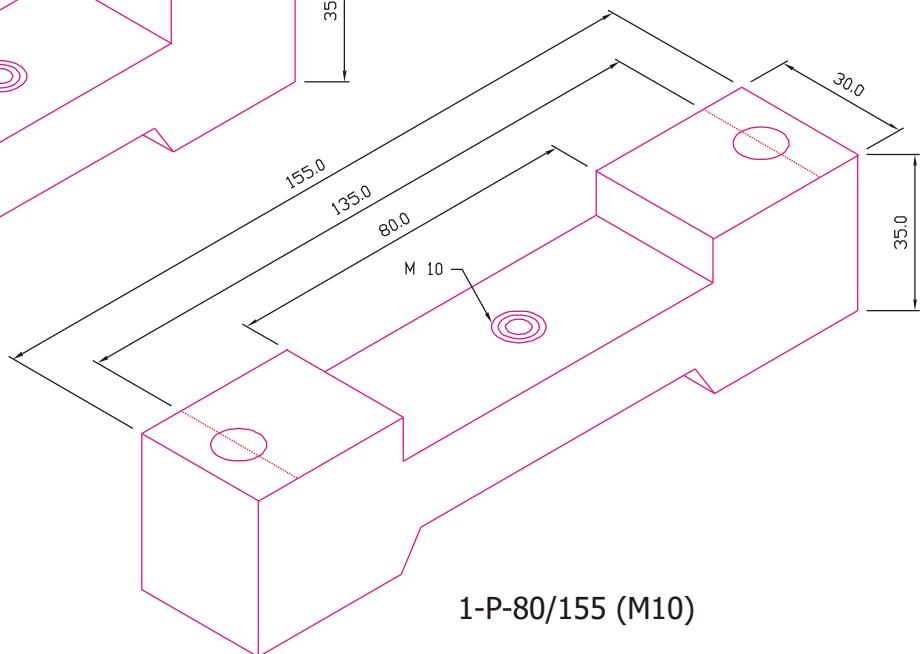
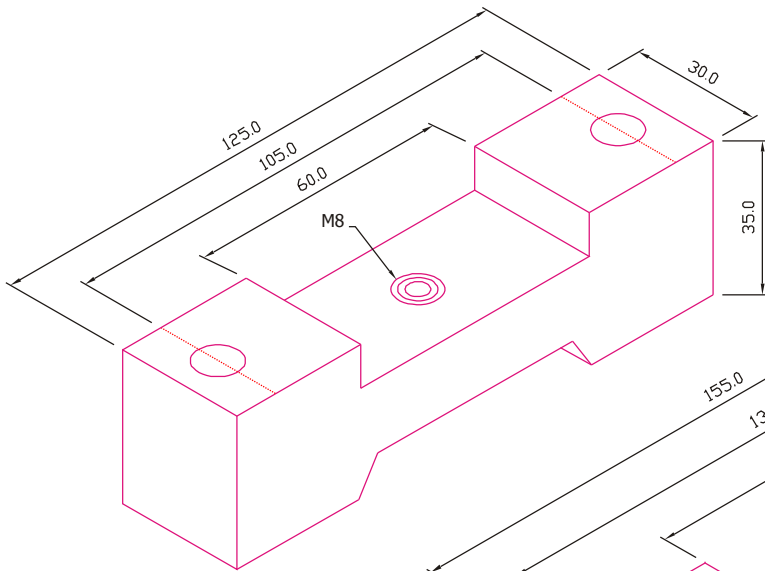
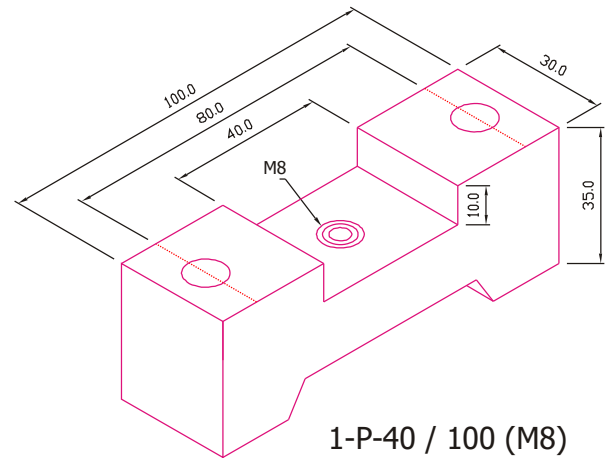
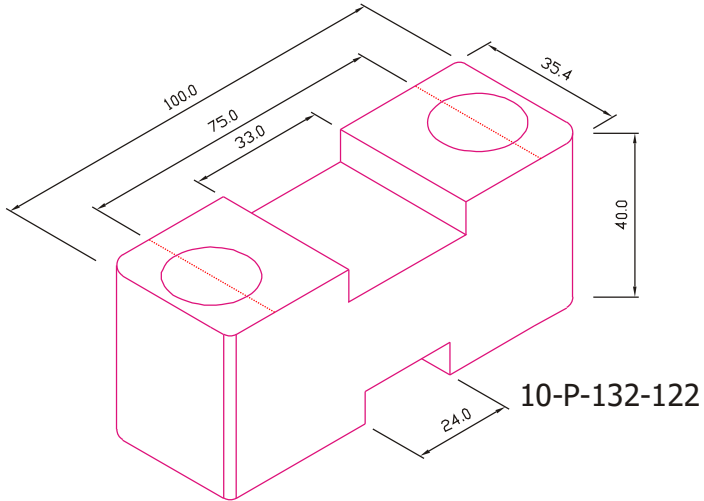
Cat #	DIMENSIONS (mm)							
	A	B	C	D	N	Z	Y	Y1
TPN-107/30	7	300	280	50	7	65	52.5	52.5
TPN-111/30	11	300	280	50	7	65	52.5	52.5
TPN-114/30	14	300	280	50	7	65	52.5	52.5
TPN-107/35	7	350	328	50	7	75	62.5	62.5
TPN-111/35	11	350	328	50	7	75	62.5	62.5
TPN-114/35	14	350	328	50	7	75	62.5	62.5
TPN-107/42	7	420	396	60	7	100	52.5	67.5
TPN-111/42	11	420	396	60	7	100	52.5	67.5
TPN-114/42	14	420	396	60	7	100	52.5	67.5
TPN-107/55	7	550	525	60	7	125	75.0	100
TPN-111/55	11	550	525	60	7	125	75.0	100
TPN-114/55	14	550	525	60	7	125	75.0	100
TPN-107/63	7	630	600	60	7	150	80.0	100
TPN-111/63	11	630	600	60	7	150	80.0	100
TPN-114/63	14	630	600	60	7	150	80.0	100



Cat #	DIMENSIONS (mm)								
	A	B	C	D	N	Z	Y	Y1	X
TPN-207/35	7	350	328	50	7	70	62	78	5.8
TPN-211/35	11	350	328	50	11	70	62	78	9
TPN-214/35	13.8	350	328	60	13.8	70	62	78	11.5
TPN-207/42	7	420	396	60	7	100	52.5	67.5	5.8
TPN-211/42	11	420	396	60	11	100	52.5	67.5	9
TPN-214/42	13.8	420	396	60	13.8	100	52.5	67.5	11.5
TPN-207/55	7	550	525	60	7	125	75	100	5.8
TPN-211/55	11	550	525	60	11	125	75	100	9
TPN-214/55	13.8	550	525	60	13.8	125	75	100	11.5
TPN-207/63	7	630	600	60	7	150	80	100	5.8
TPN-211/63	11	630	600	60	11	150	80	100	9
TPN-214/63	13.8	630	600	60	13.8	150	80	100	11.5

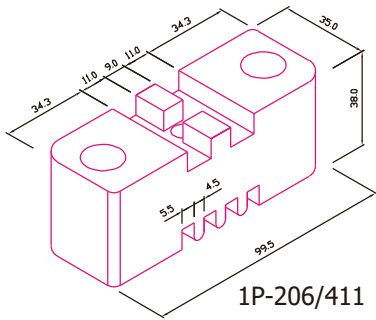
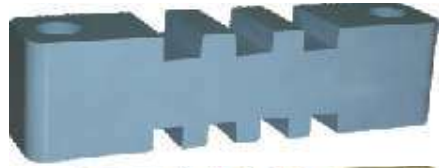
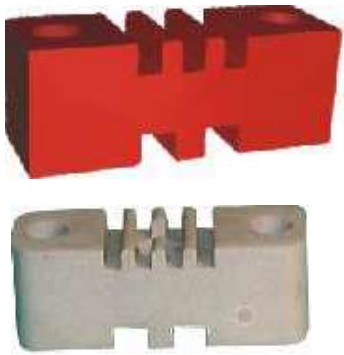
BUSBAR SUPPORTS

INSULATOR FOR HORIZONTAL BARS

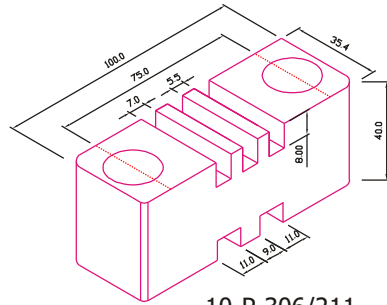


BUSBAR SUPPORTS

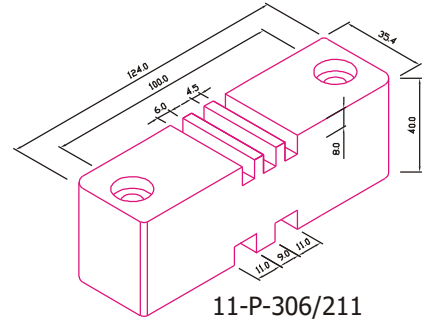
INSULATOR FOR VERTICAL BUSBARS



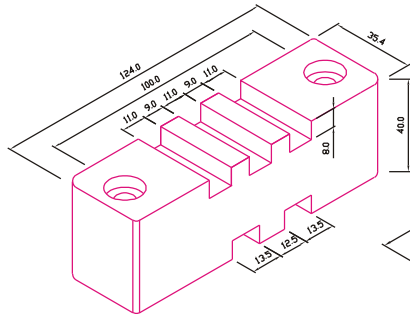
1P-206/411



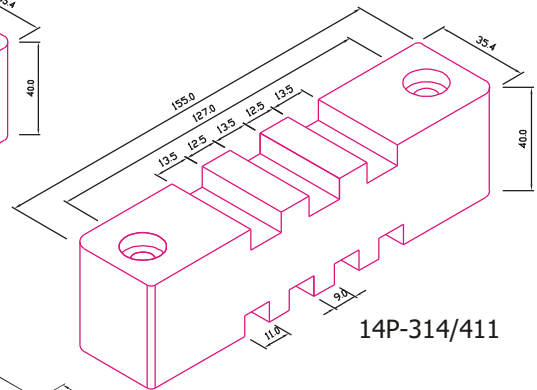
10-P-306/211



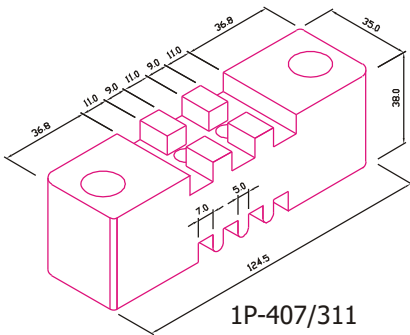
11-P-306/211



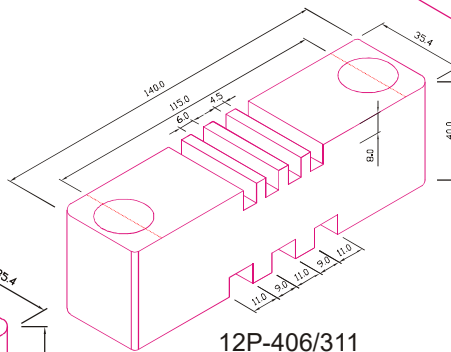
11P-311/214



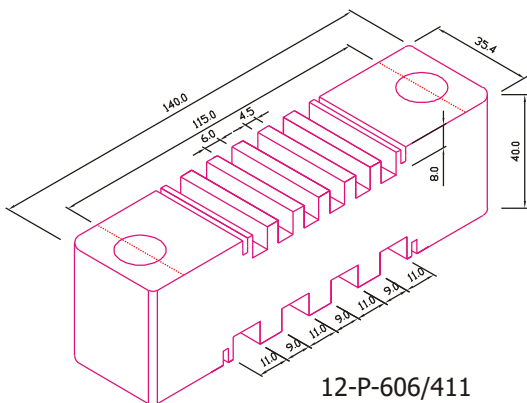
14P-314/411



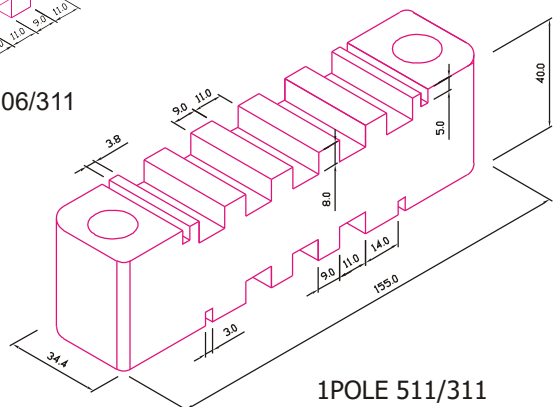
1P-407/311



12P-406/311



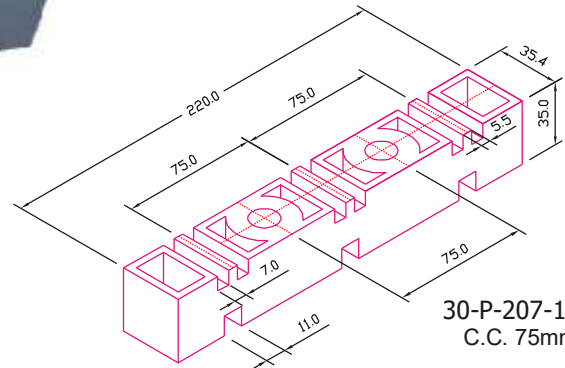
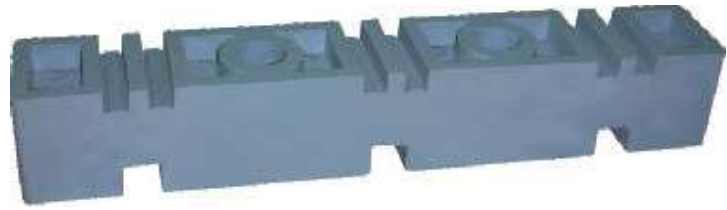
12-P-606/411



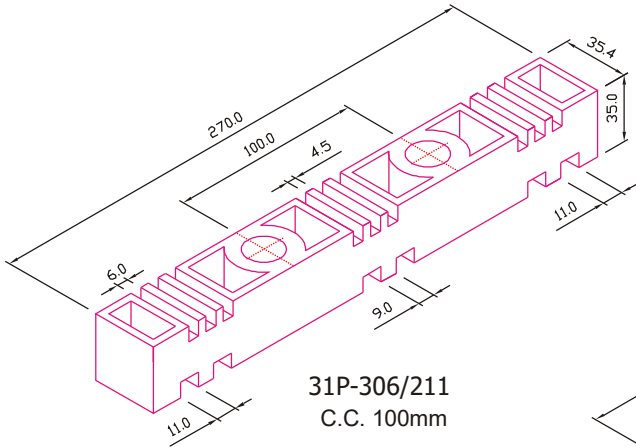
1POLE 511/311

BUSBAR SUPPORTS

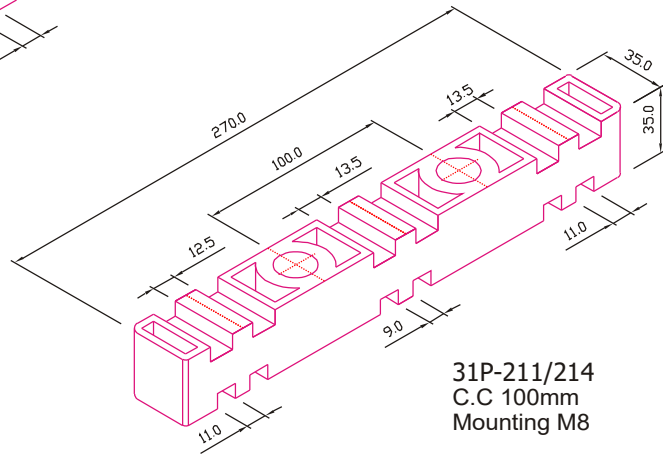
INSULATOR FOR VERTICAL BUSBARS



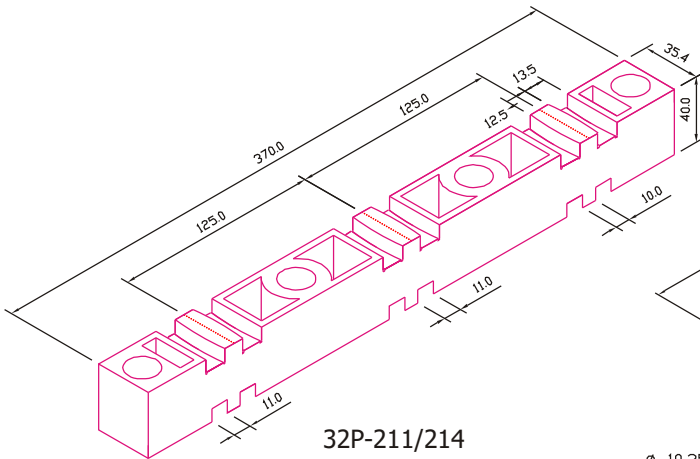
30-P-207-111
C.C. 75mm



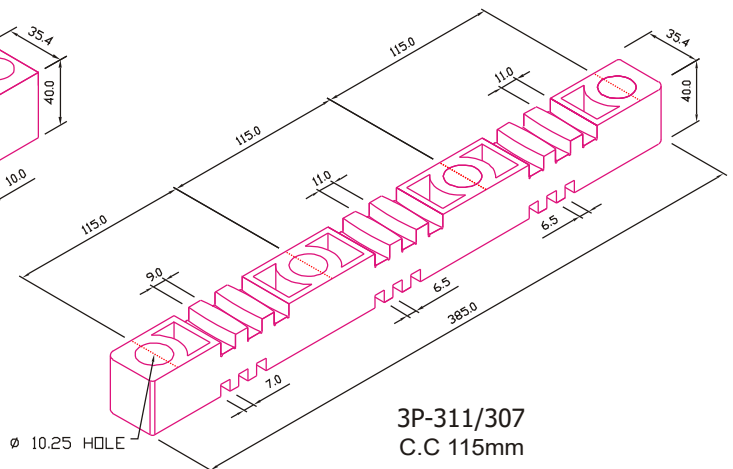
31P-306/211
C.C. 100mm



31P-211/214
C.C 100mm
Mounting M8



32P-211/214
C.C 125mm
Mounting M8

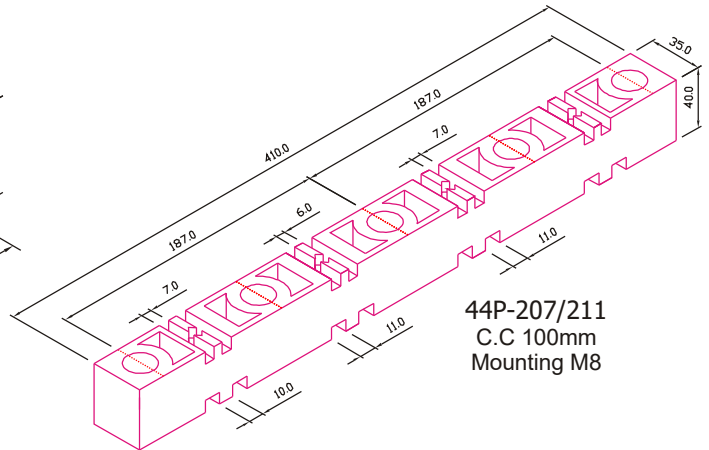
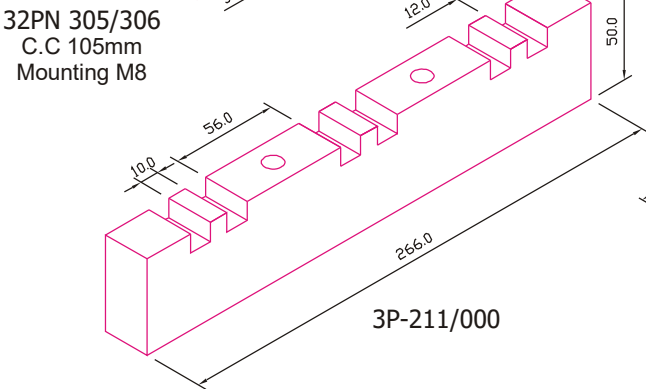
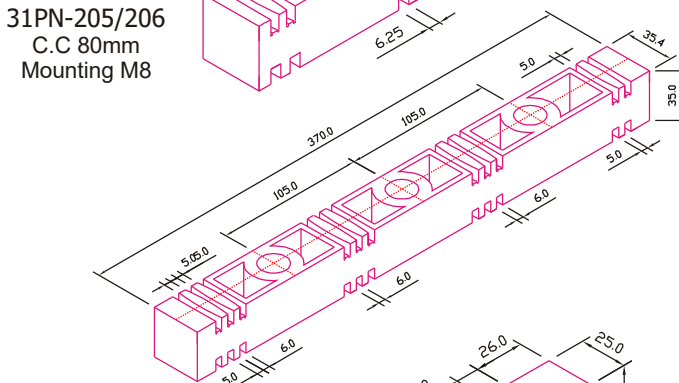
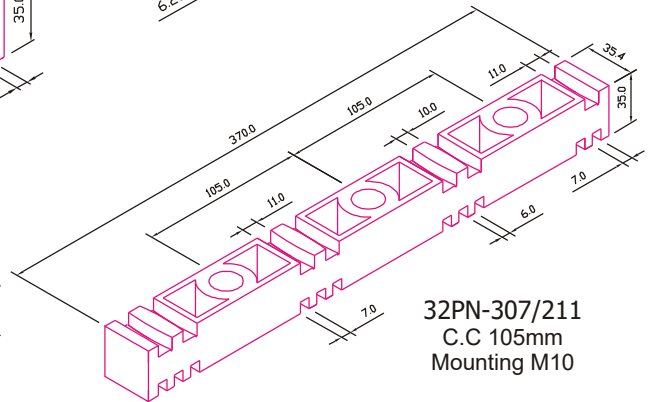
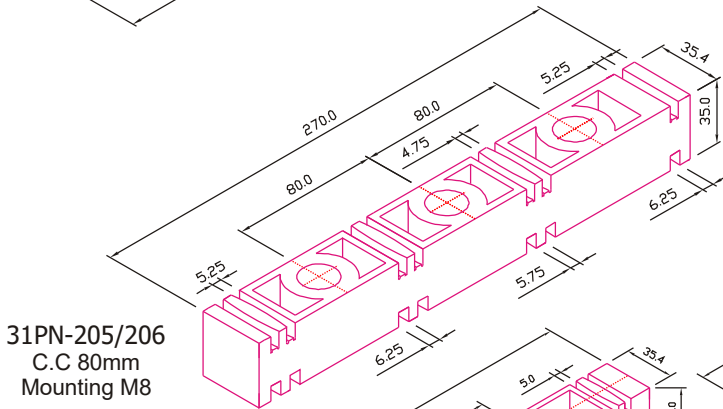
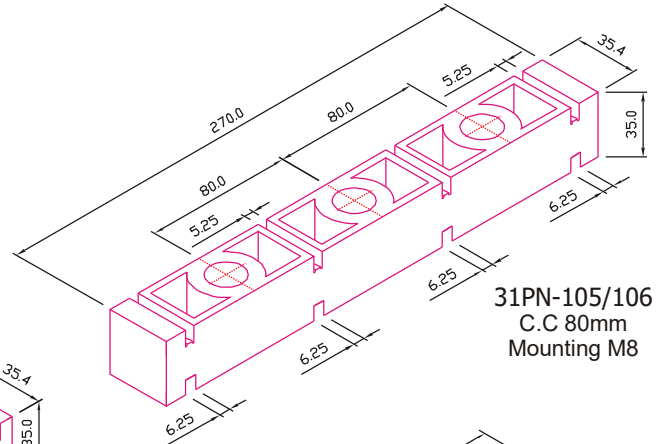
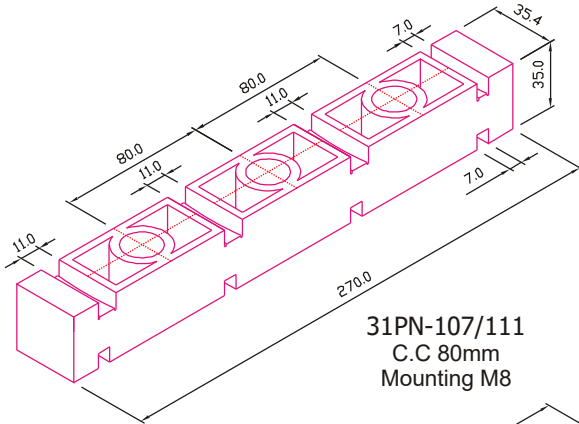


3P-311/307
C.C 115mm

∅ 10.25 HOLE

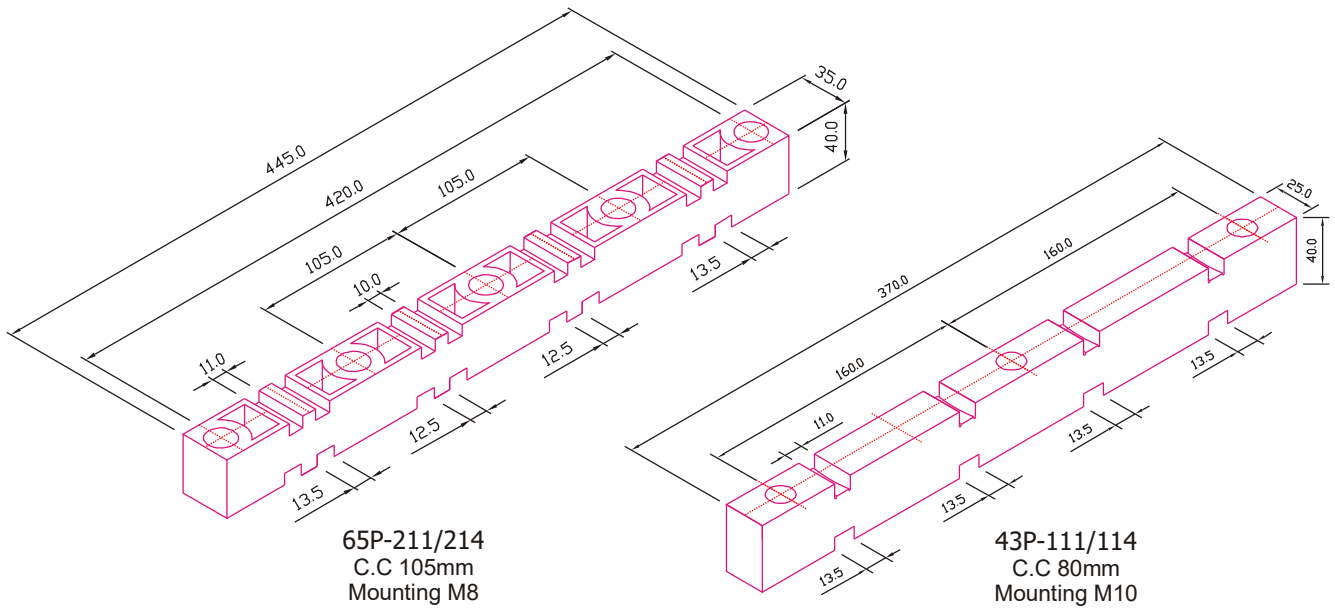
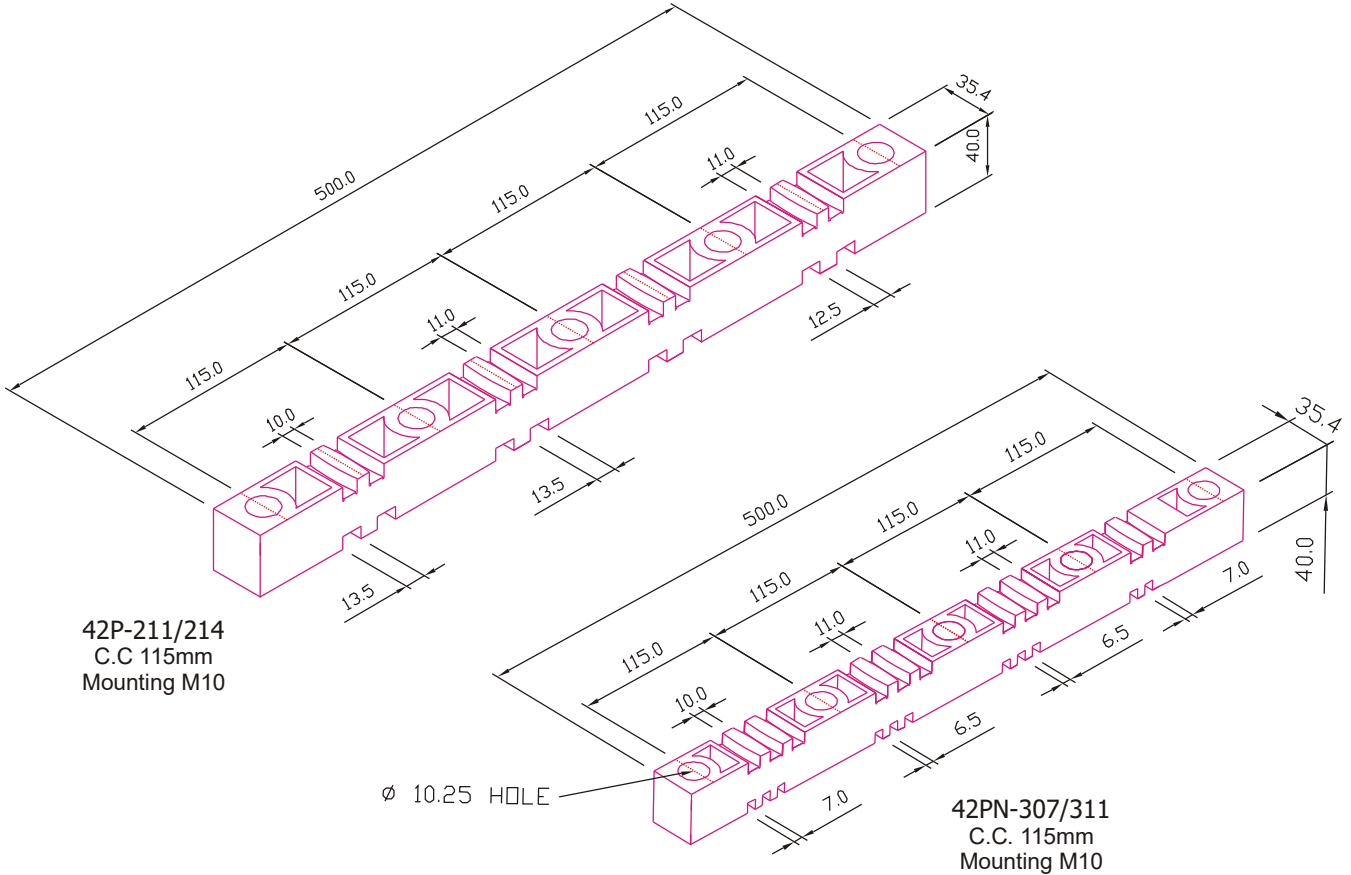
BUSBAR SUPPORTS

INSULATOR FOR VERTICAL BUSBARS



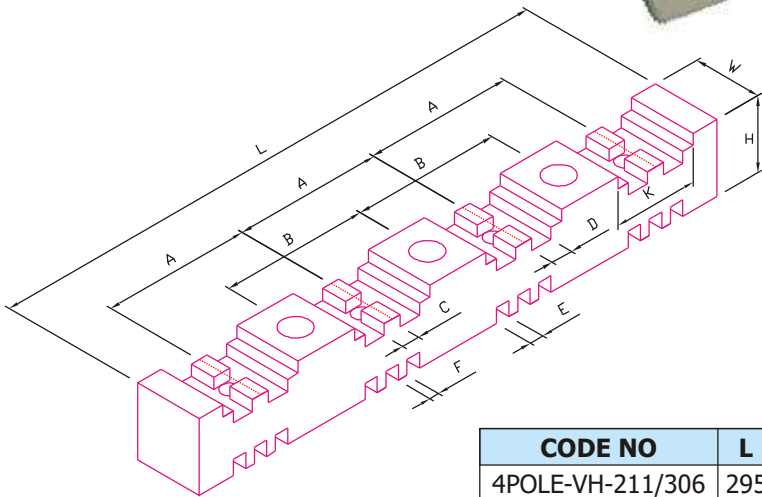
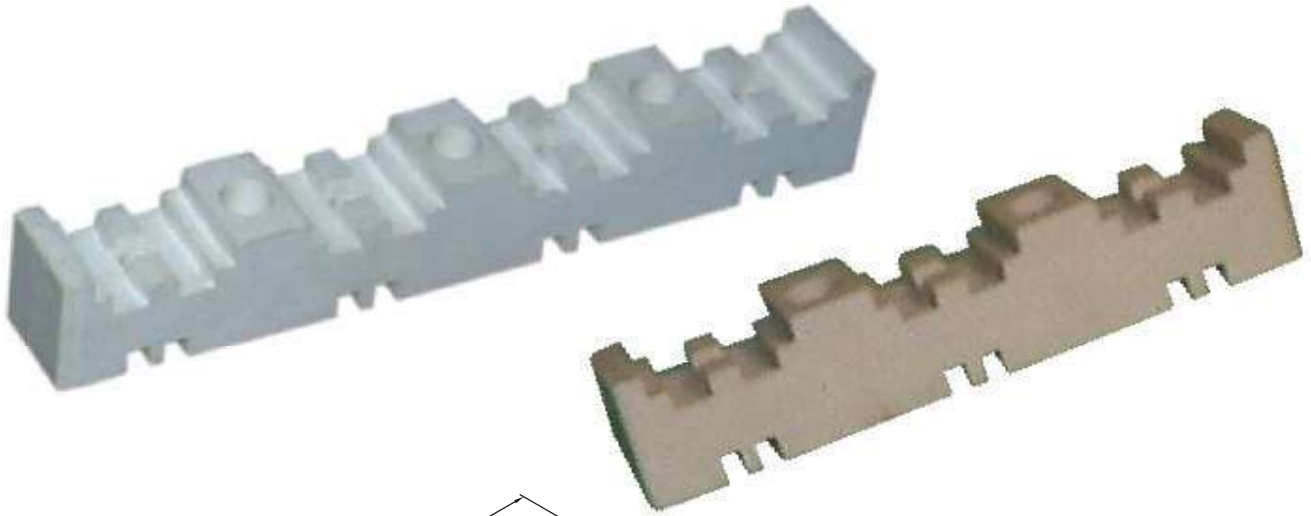
BUSBAR SUPPORTS

INSULATOR FOR VERTICAL BUSBARS

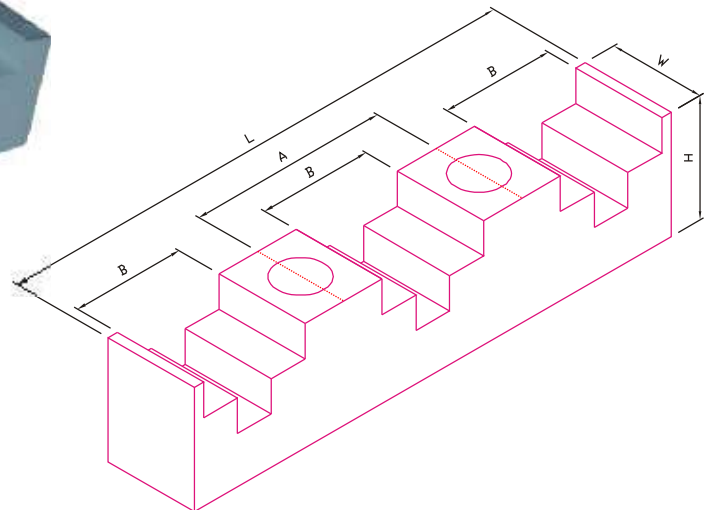
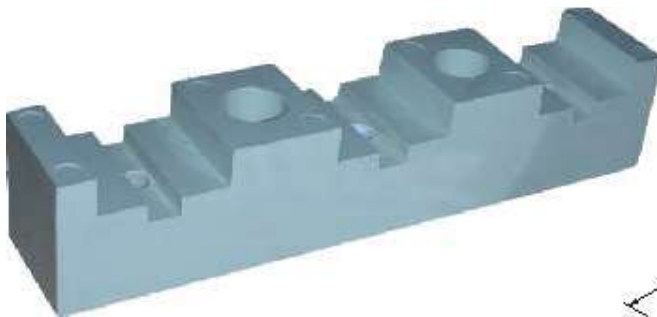


BUSBAR SUPPORTS

INSULATOR FOR VERTICAL / HORIZONTAL BUSBARS



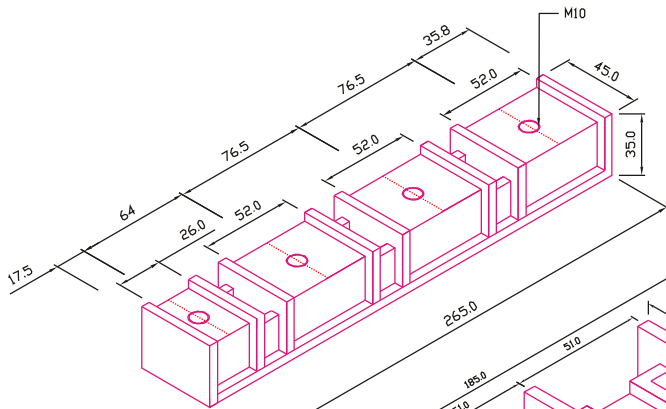
CODE NO	L	H	W	A	B	C	D	E	F	K
4POLE-VH-211/306	295	38	35	75	75	9	11	7	5	42
4POLE-VH-211/206	255	38	35	65	65	9	11	6	4.5	42
3POLE-VH-211/206	190	38	35	65	65	9	11	6	4.5	42



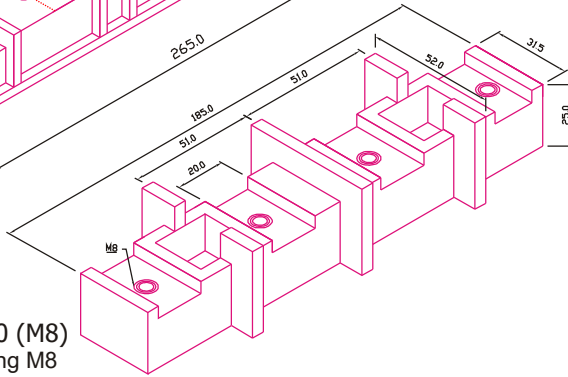
CODE NO	L	H	W	A	B
TP-32/122	122	29	28	43	21
TP-32/142	142	29	28	50	27

BUSBAR SUPPORTS

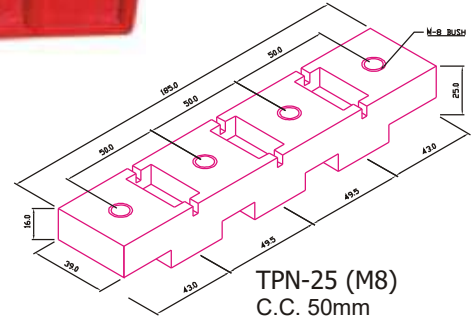
INSULATOR FOR VERTICAL / HORIZONTAL BUSBARS



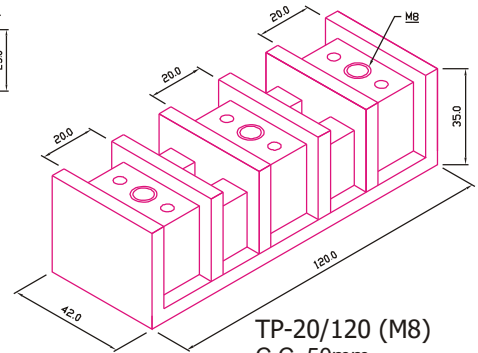
TPN-50 (M10)
Mounting M8



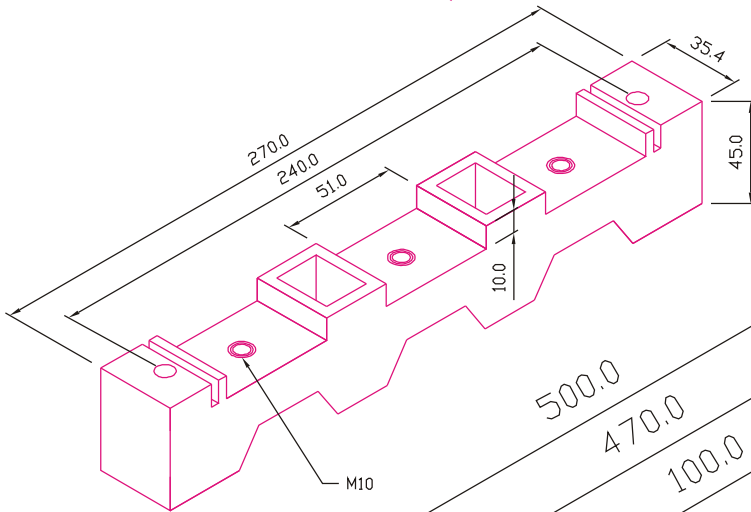
TPN-20 (M8)
Mounting M8



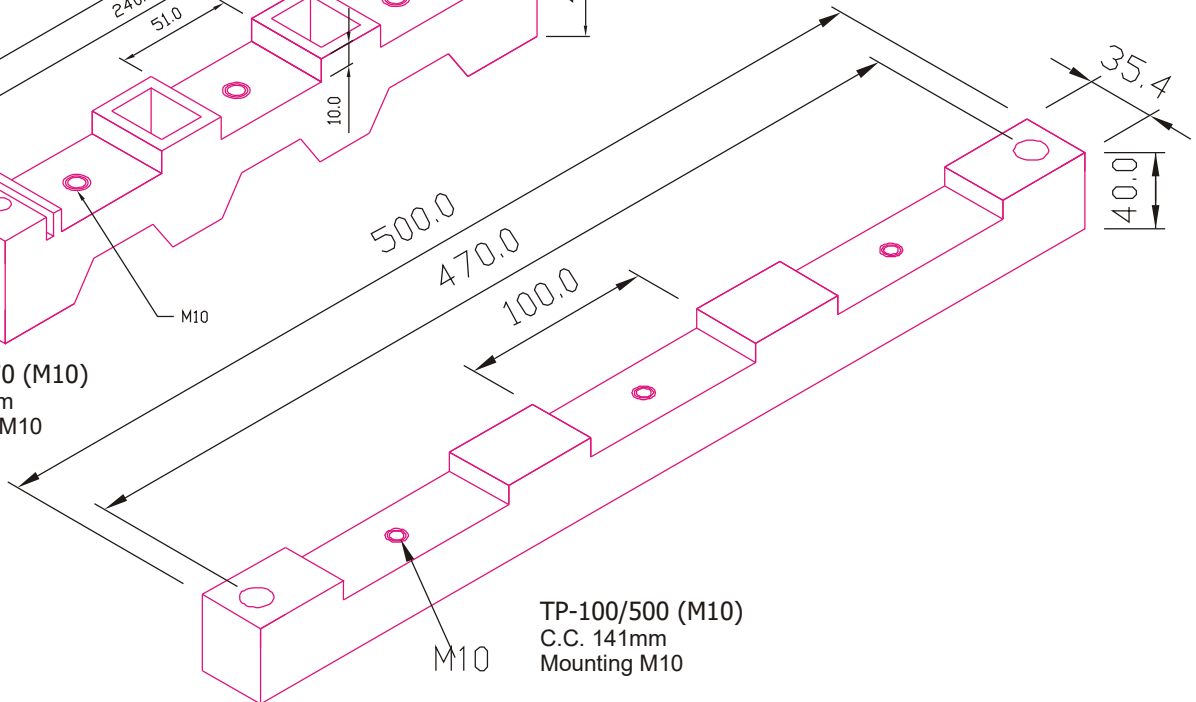
TPN-25 (M8)
C.C. 50mm
Mounting M8



TP-20/120 (M8)
C.C. 50mm
Mounting M8



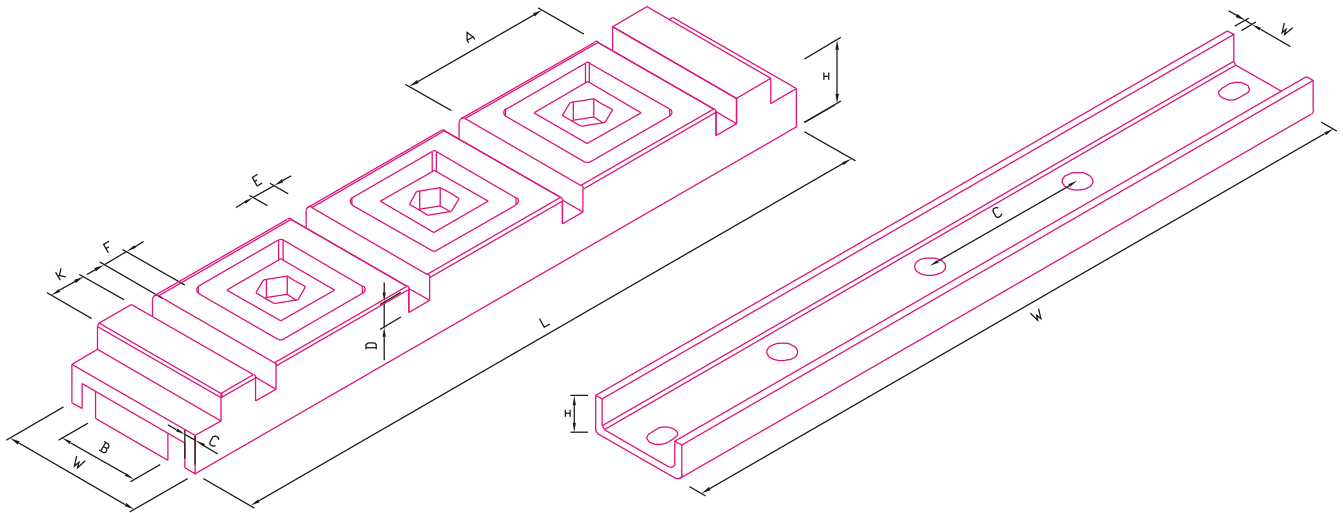
TP-50/270 (M10)
C.C. 70mm
Mounting M10



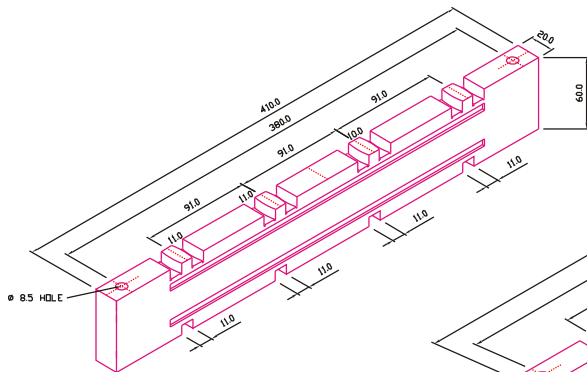
TP-100/500 (M10)
C.C. 141mm
Mounting M10

BUSBAR SUPPORTS

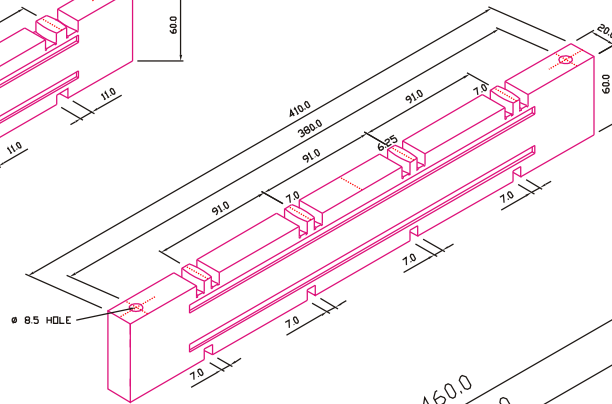
INSULATOR FOR VERTICAL / HORIZONTAL BUSBARS



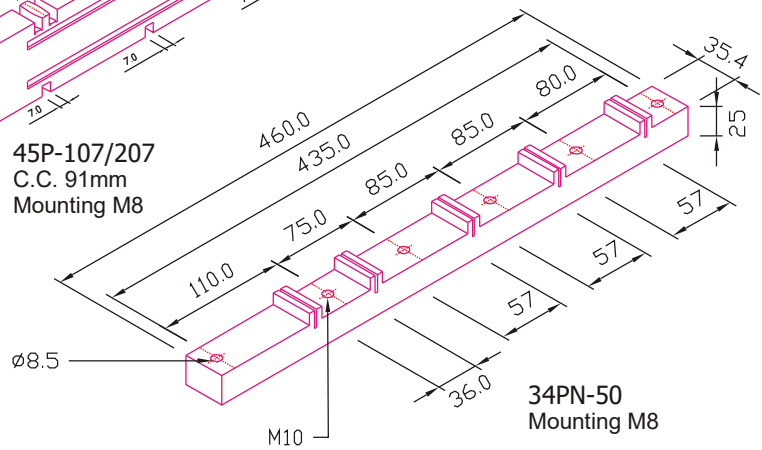
CAT #	DIMENSION OF INSULATOR										DIMENSION OF CHANNEL			
	L	H	W	A	B	C	D	E	F	K	L	W	H	C
DS4P	175	19.5	36	38	21	3	6.4	6	6.5	10.2	188	2	9.5	44
DS3P	130.5	19.5	36	38	21	3	6.4	6	6.5	10.2	143.5	2	9.5	44



45P-111/211
C.C. 91mm
Mounting M8



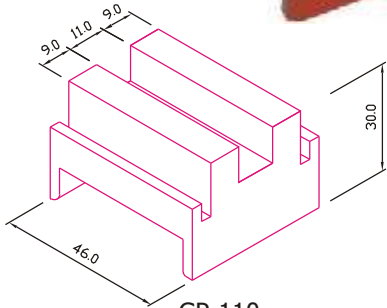
45P-107/207
C.C. 91mm
Mounting M8



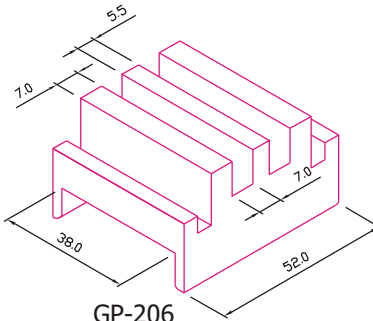
34PN-50
Mounting M8

BUSBAR SUPPORTS

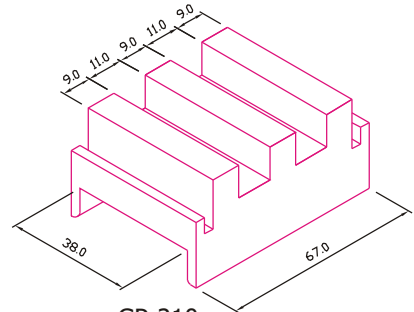
GRIP TYPE FOR VERTICAL BUSBARS



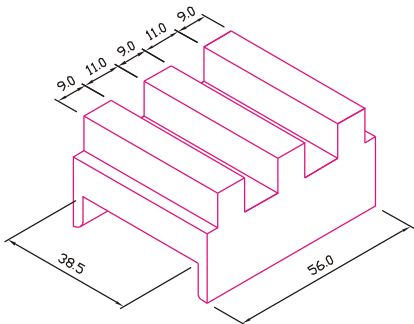
GP-110



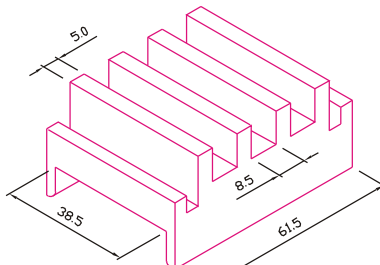
GP-206



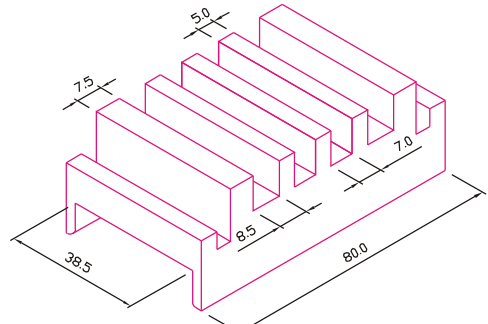
GP-210



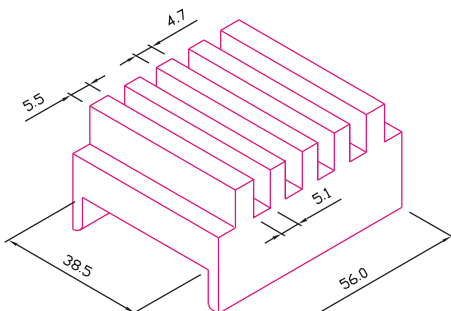
GPS-210



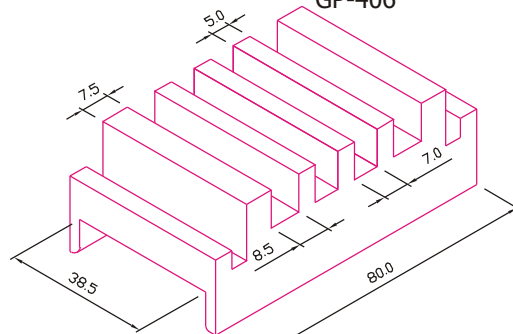
GP-306



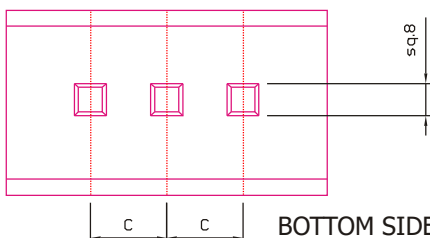
GP-406



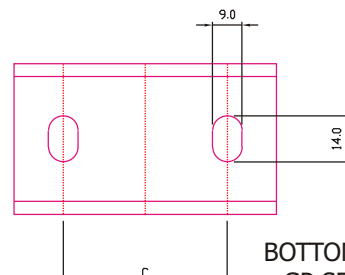
GPS-405



GP-406



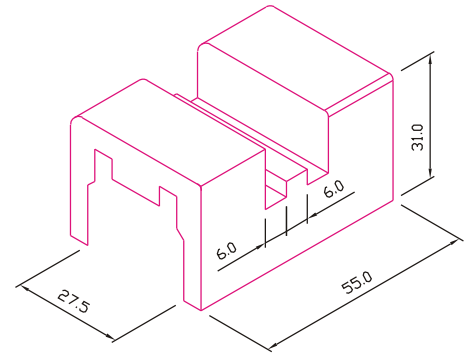
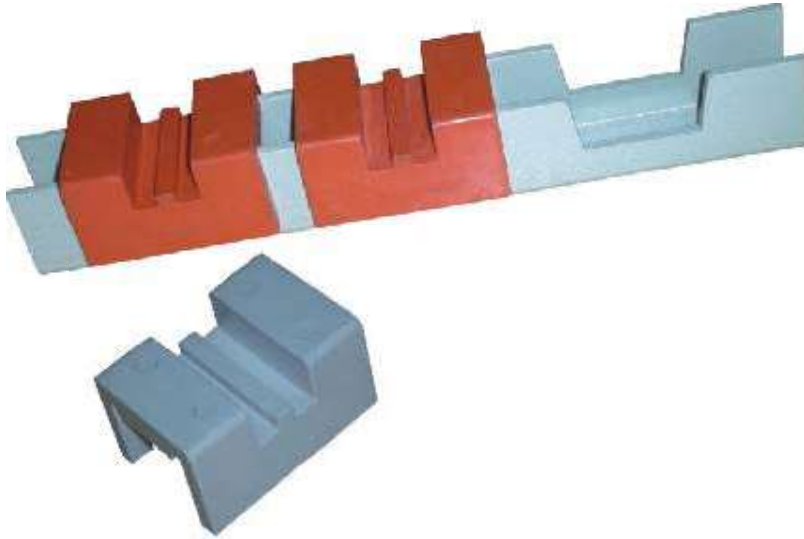
BOTTOM SIDE
GPS SERIES



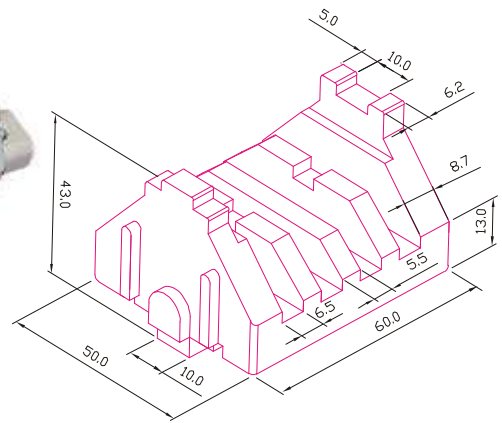
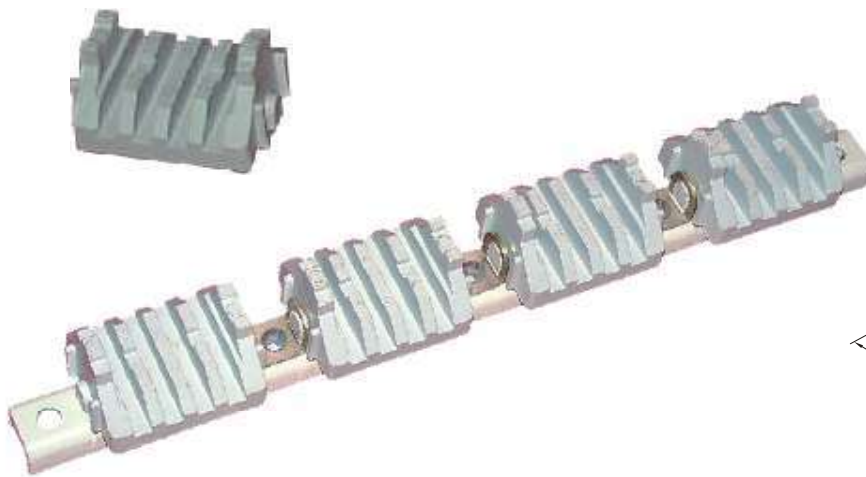
BOTTOM SIDE
GP SERIES

BUSBAR SUPPORTS

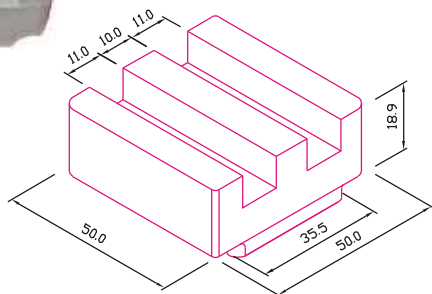
INSULATOR FOR VERTICAL BUSBARS



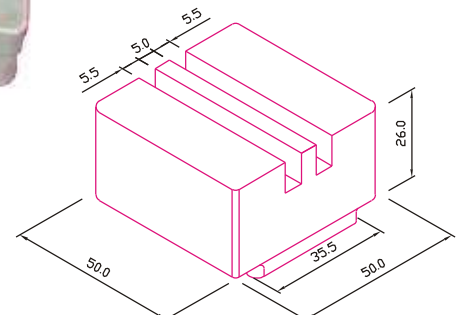
GPB-2498



GP406-DM



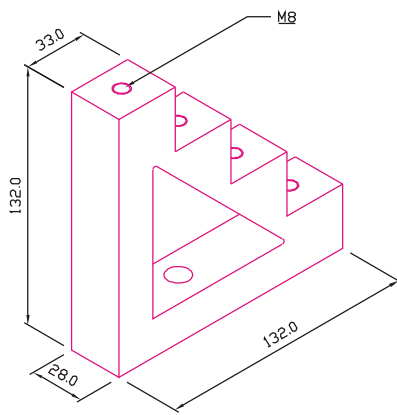
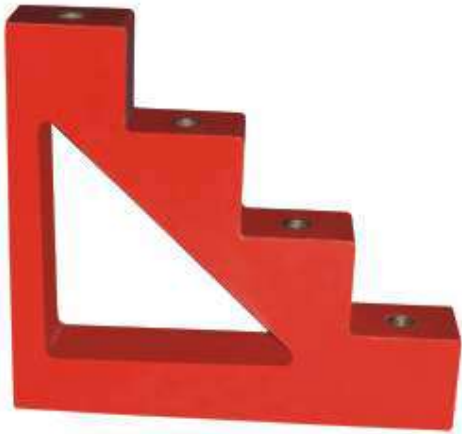
1P50-210-000



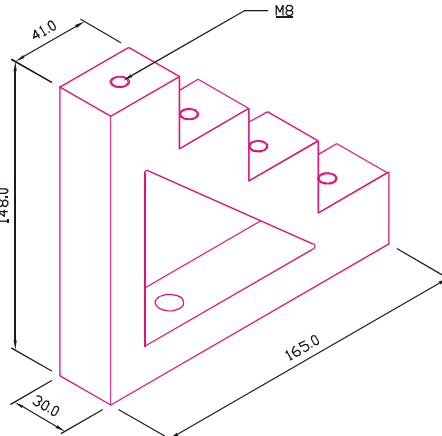
1P50-205-000

BUSBAR SUPPORTS

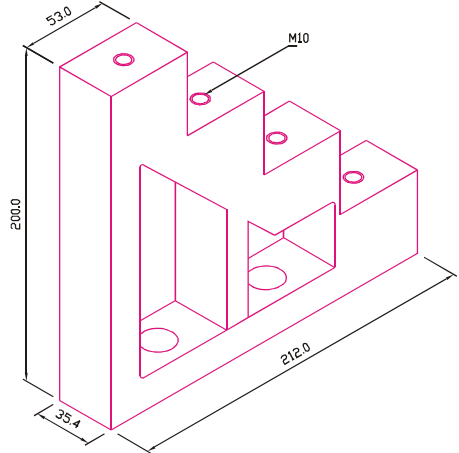
STEP INSULATORS



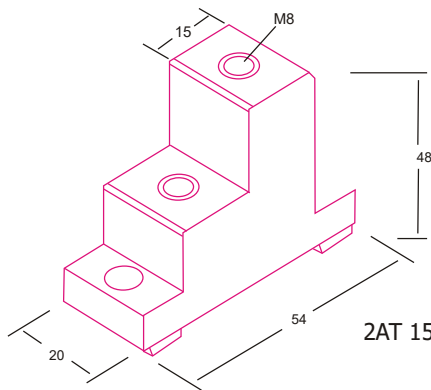
4 AT 30



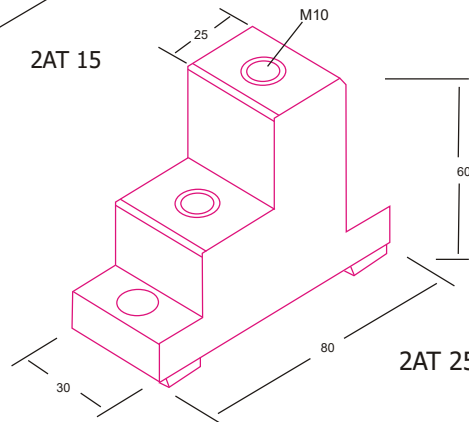
4 AT 40



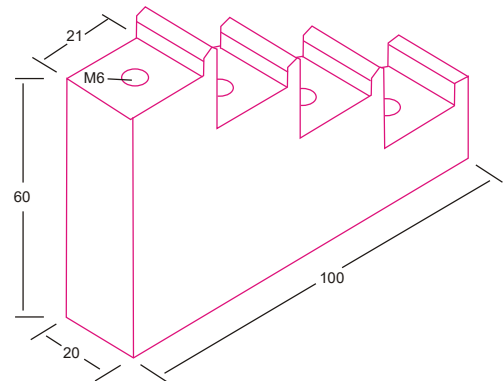
4 AT 50



2AT 15



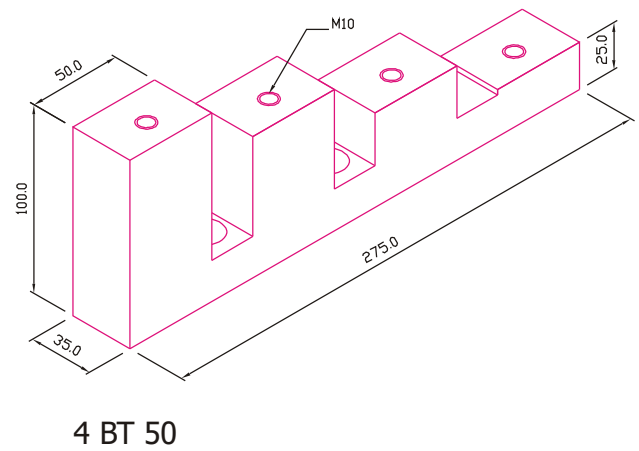
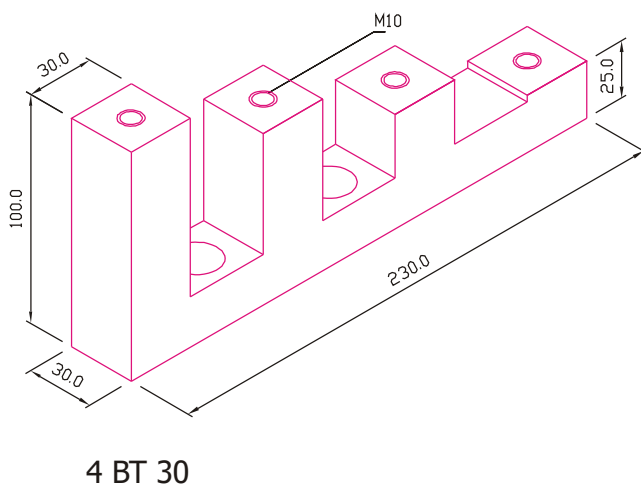
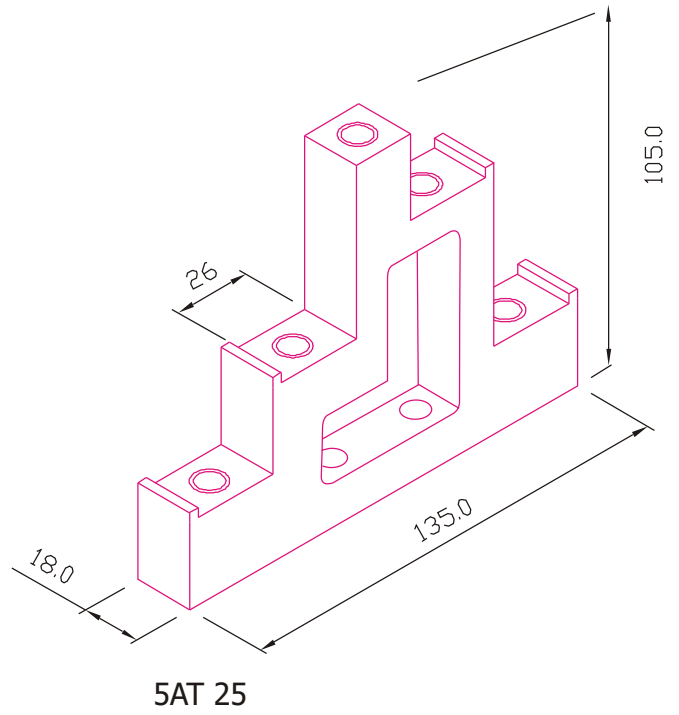
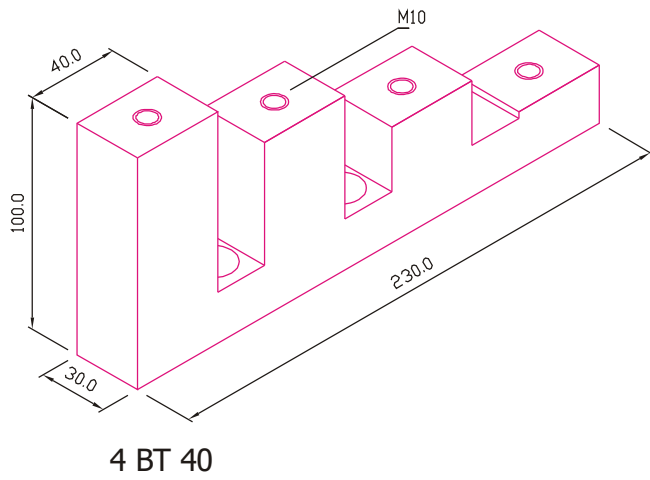
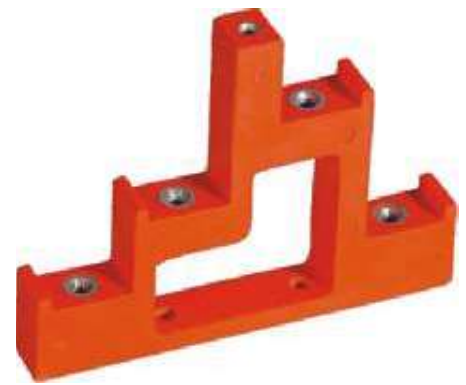
2AT 25



4 AT 20

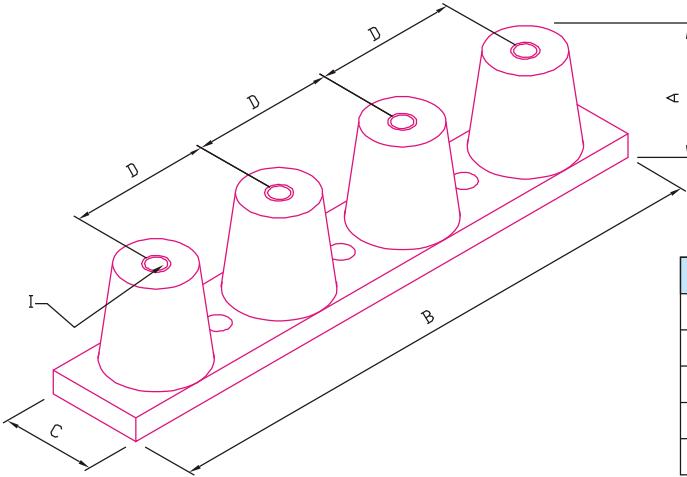
BUSBAR SUPPORTS

STEP INSULATORS



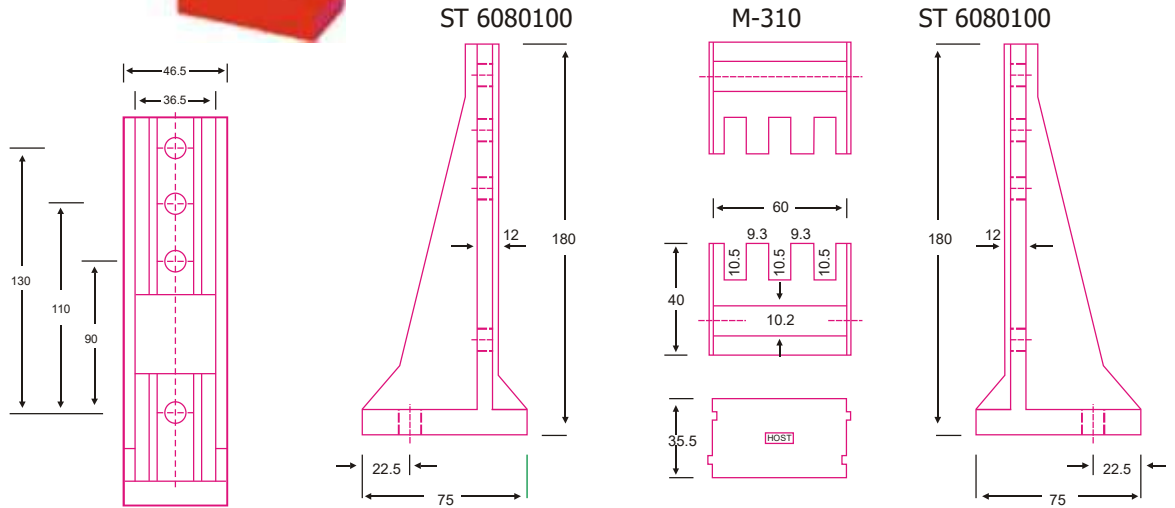
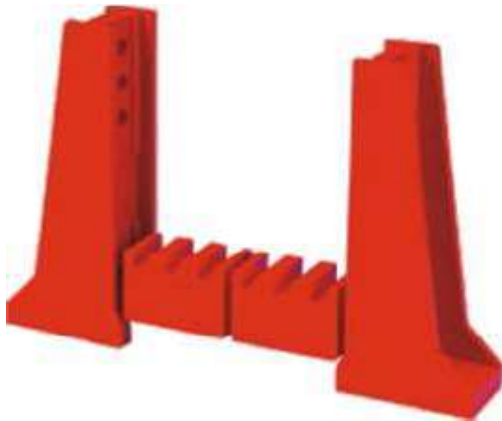
BUSBAR SUPPORTS

COMBI FOUR POLE CONICAL SERIES



CODE NO	A	B	C	D	I
4C-525	25	120	20	35	M5
4C-630	30	185	25	52	M6
4C-845	45	260	35	70	M8
HD4C-628	28	215	25	60	M6
HD4C-845	45	230	35	60	M8

MODULAR SUPPORT



BUSBAR SUPPORTS

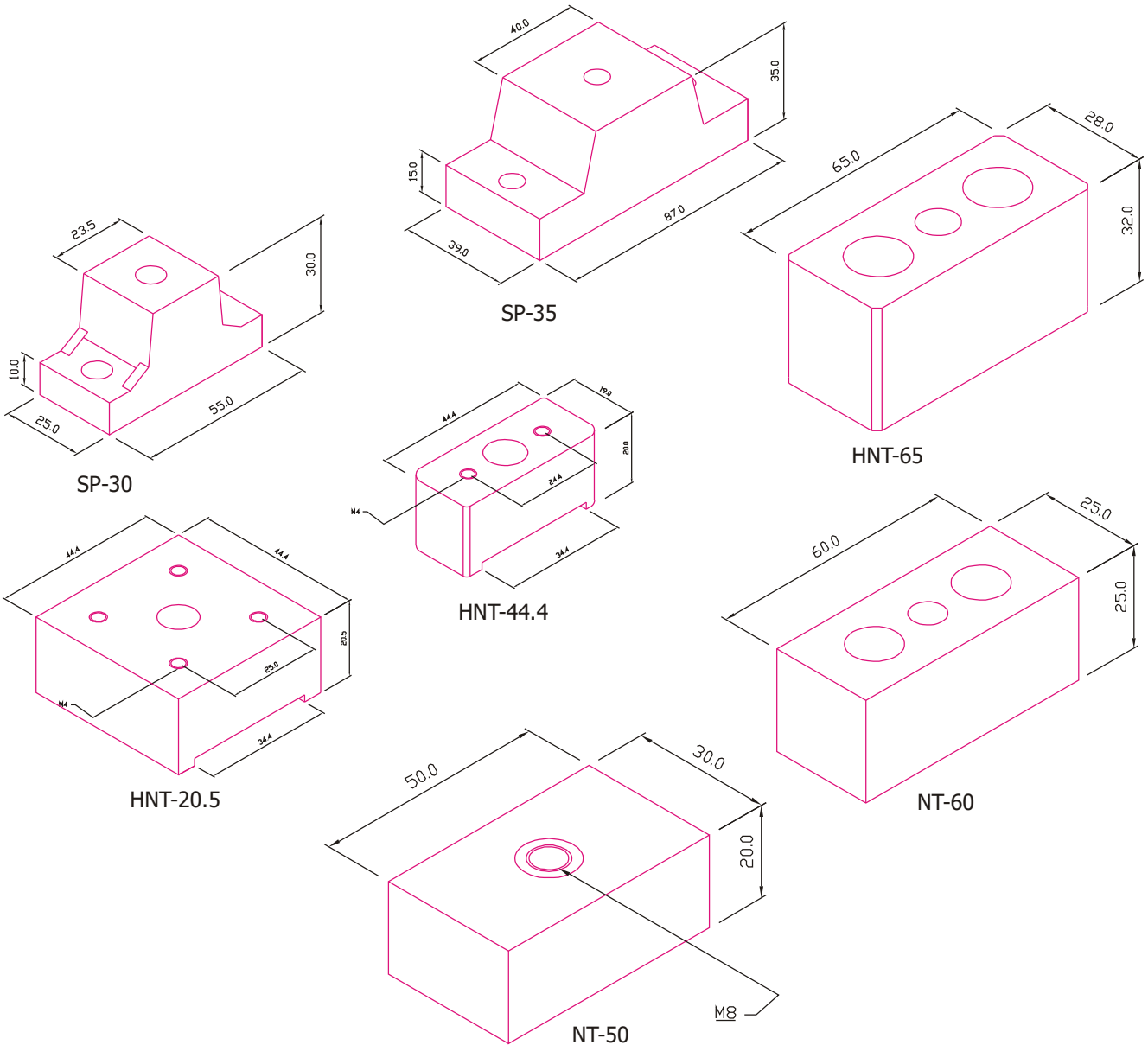
Various type of supports for neutrals and busbars



Neutral Supports suitable for 10 x 3 copper busbars



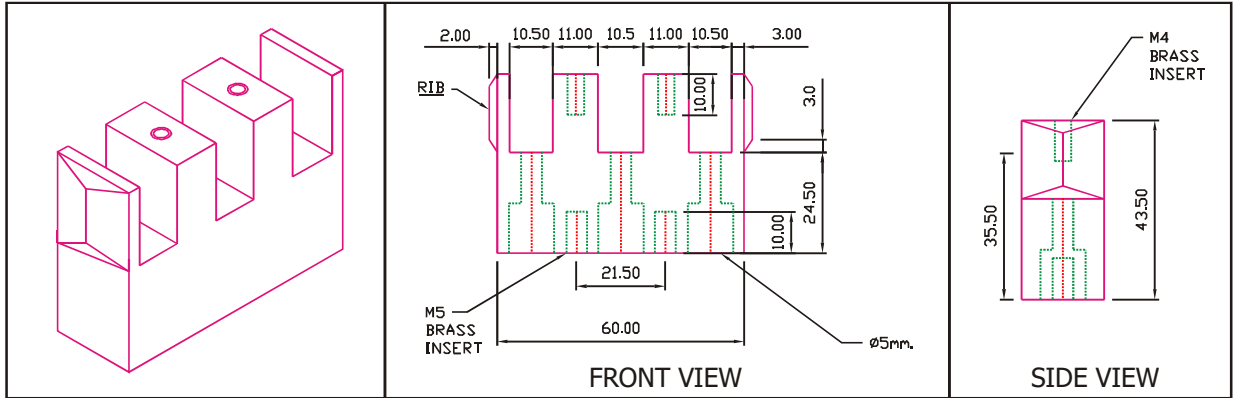
Neutral Supports



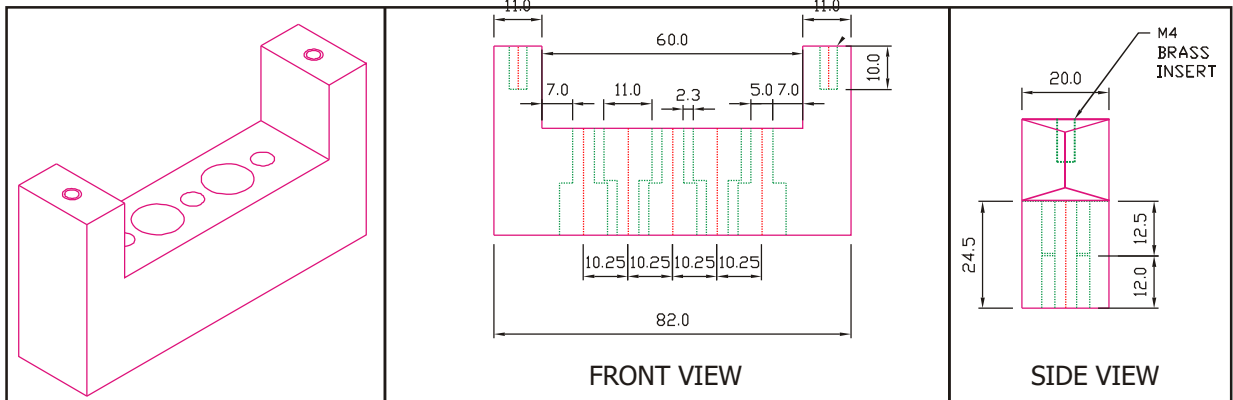
BUSBAR SUPPORTS

INSULATORS FOR D.B. ASSEMBLY

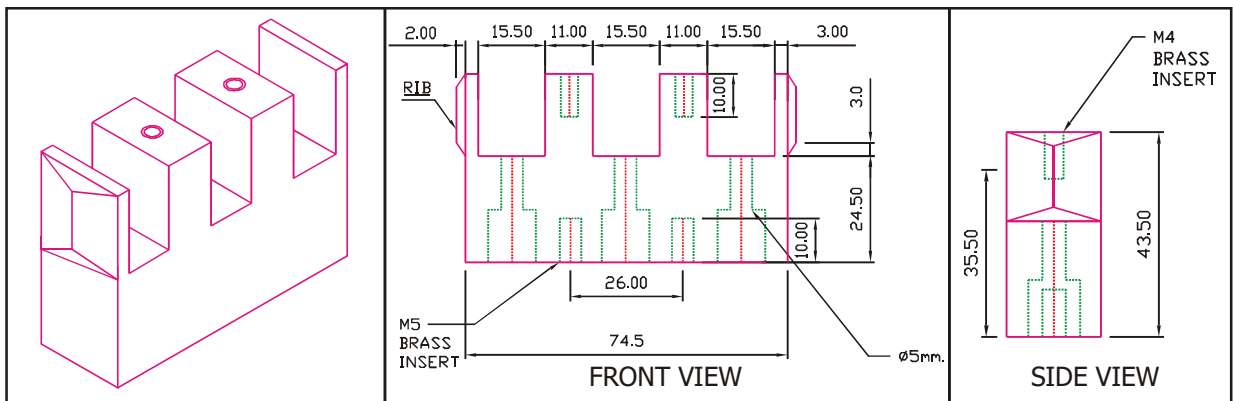
INSULATORS FOR D.B ASSEMBLY NO. 1



INSULATOR FOR D.B ASSEMBLY NO. 2

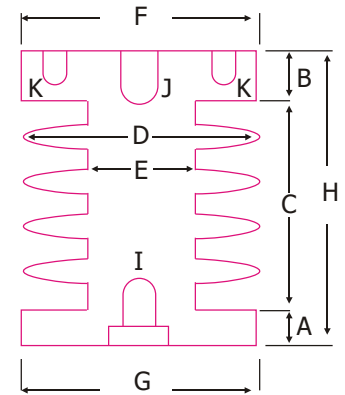


INSULATOR FOR D.B ASSEMBLY NO. 3



STANDOFF INSULATORS

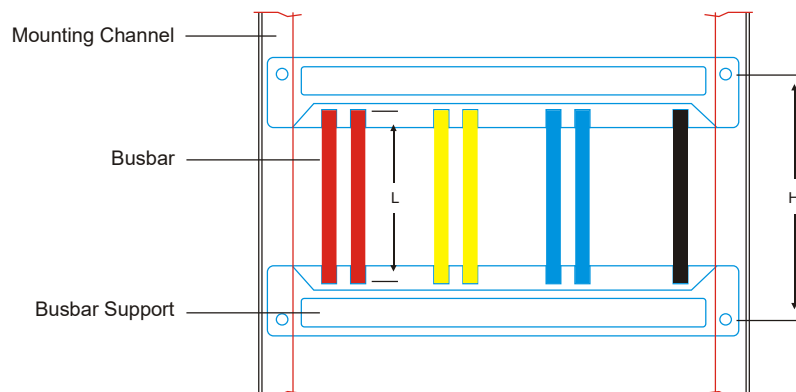
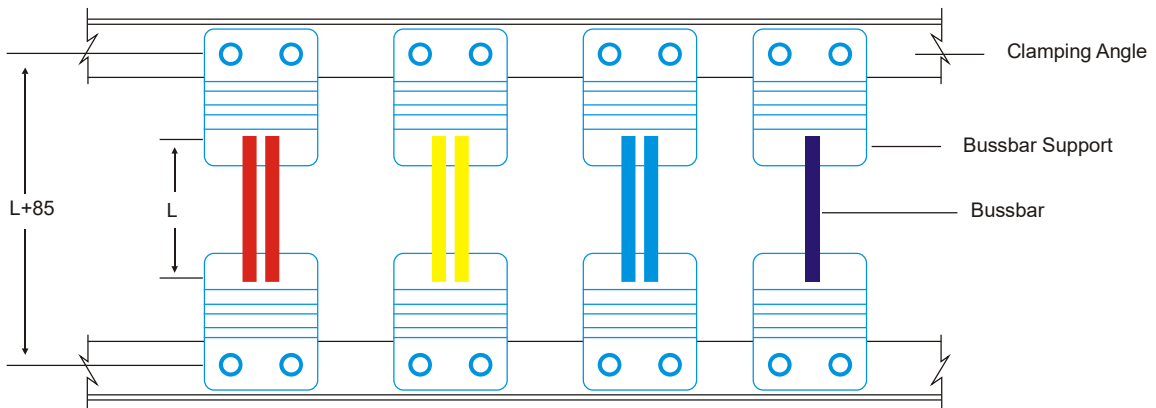
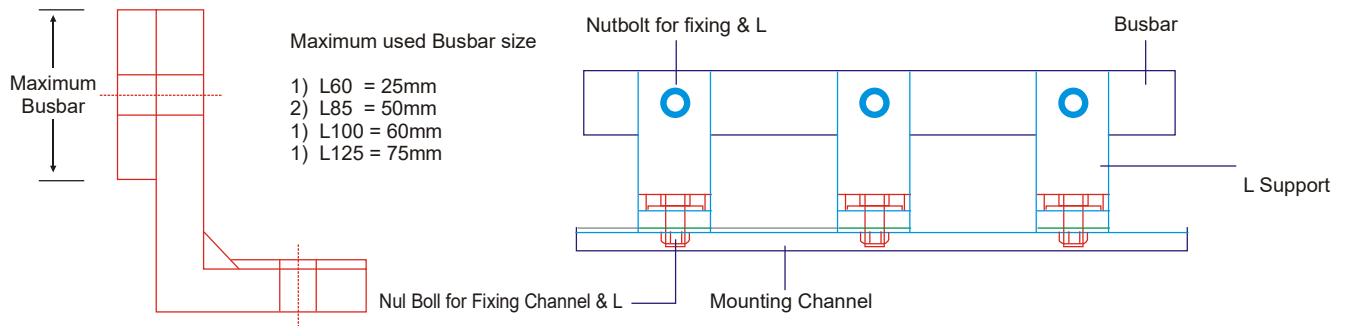
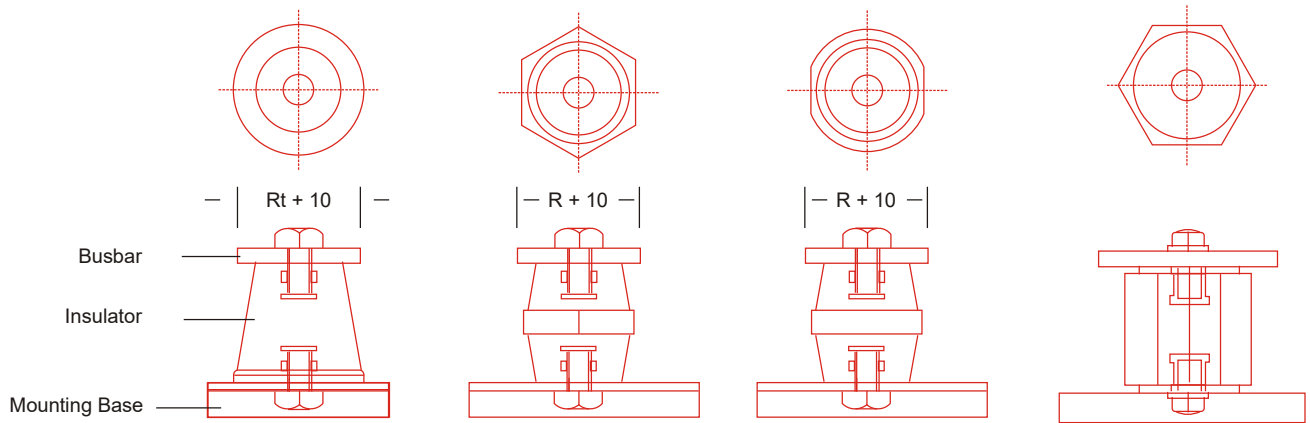
HV EPOXY INSULATOR



CODE #	CREE-PAGE	NO. OF PETTL-COATS	KV RAT-INGS	A	B	C	D	E	F	G	H	INSERT			CANTILEVER STRENGTH
												I	J	K	
HI475	104	2	3.3	21	19	35	60	45	61	61	75	M12	M10	M6	500
HI008	225	4	3.3	21	12	79	78	40	43	43	112	M10	M10	NIL	500
HI490	138	3	6.6	18	21	51	62	45	61	61	90	M12	M10	M6	500
HI890	150	3	6.6	18	20	52	89	66	89	89	90	M12	M10	M6	500
HI079	180	4	6.6	31	32	67	65	40	55	55	130	M16	M10	M8	500
HI4975	178	5	11	27	19	84	57	45	61	61	130	M16	M10	M6	550
HI095	178	4	11	30	32	68	78	55	71	71	130	M20	M16	M10	700
HI7015	216	5	11	32	23	75	75	55	75	75	130	M20	M16	M8	800
HI701	190	5	11	23	23	84	75	58	80	77	130	M20	M16	M10	800
HI151	165	3	11	21	27	82	95	79	95	95	130	M20	NIL	M10	1000
HI1020	185	5	11	27	28	75	81	66	83	76	130	M20	M16	M10	850
HI050	237	5	11	47	36	82	74	55	77	77	165	M20	M10	M10	800
HIC10	228	4	11	40	41	94	64	48	67	52	175	M16	M12	NIL	600
HIC15	228	4	11	40	43	92	71	55	77	61	175	M16	NIL	M6	700
HIC290	290	5	11	50	52	118	74	50	50	50	220	M12	M12	NIL	500
HI045	250	5	22	47	49	82	74	55	77	77	178	M20	NIL	4XM8	800
HI390	586	5	22	53	52	115	134	50	50	50	220	M12	M12	NIL	500
HIC20	355	6	22	42	41	142	84	55	77	60	225	M16	NIL	M6	800
HI027	410	11	33	37	30	233	97	81	98	98	300	M24	M16	M10	1200
HI030	450	8	33	20	10	180	161	129	120	120	210	M20	M20	NIL	1500
HIABB	355	8	11	13	15	112	118	84	84	84	140	M20	M16	M10	1000
HI296	245	6	11	21	25	84	76	54	77	77	130	M20	M16	M10	800
HI4978	200	5	11	22	27	81	66	50	68	68	130	M16	-	M8	700
HI210HT	290	8	22	-	20	190	83	-	85	85	210	M20	M16	M10	1000
HI230HT	310	8	22	-	40	190	83	-	85	85	230	M20	M16	M10	1000
HI031	380	7	12	24	24	102	132	90	90	90	150	M20	-	M16	1000
HI02	410	11	33	42	42	216	85	64	70	70	300	M16	M10	M8	850
HI476	100	1	3	27	25	35	72	60	75	75	87	M16	M16	M10	750
HI297	220	5	11	24	20	86	74	59	77	77	130	M20	M16	M10	800

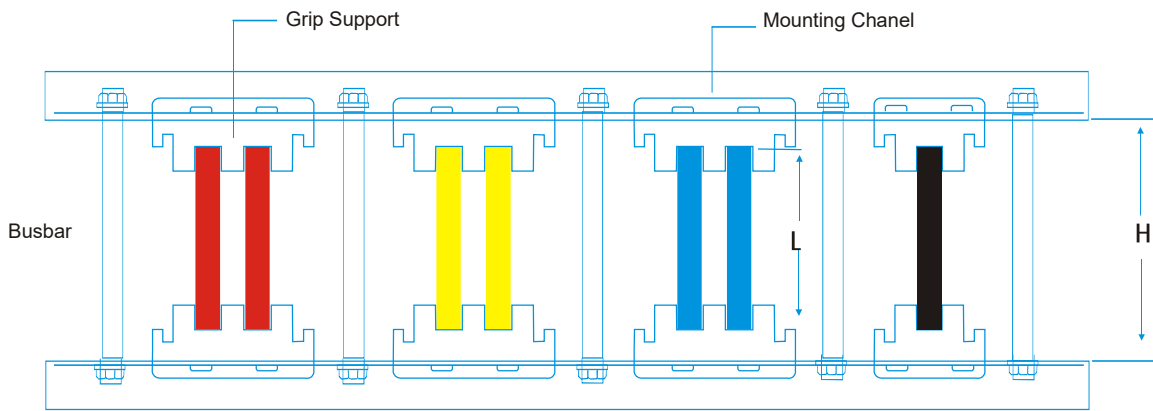
BUSBAR SUPPORTS

MOUNTING DETAILS

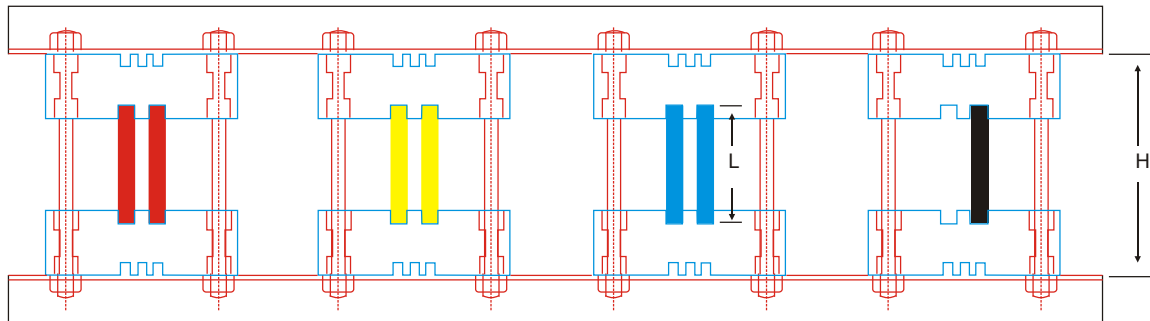
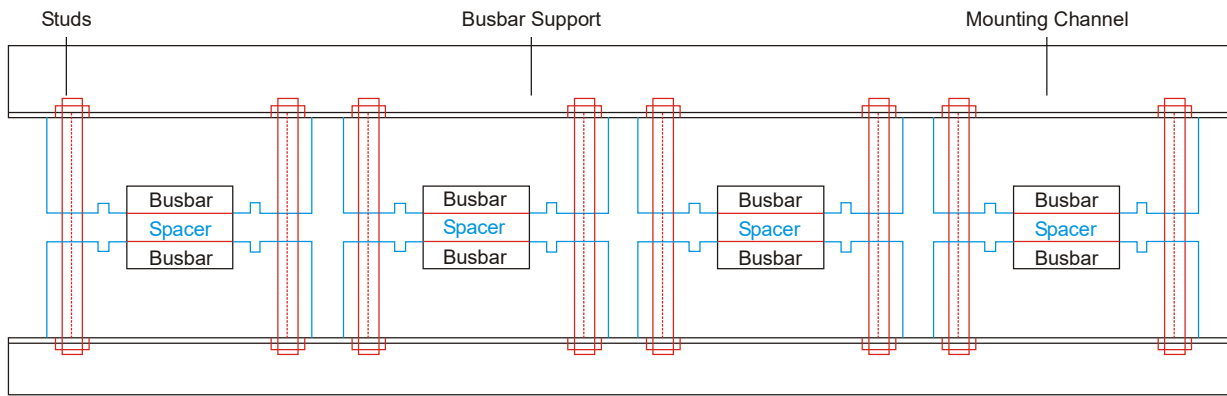


BUSBAR SUPPORTS

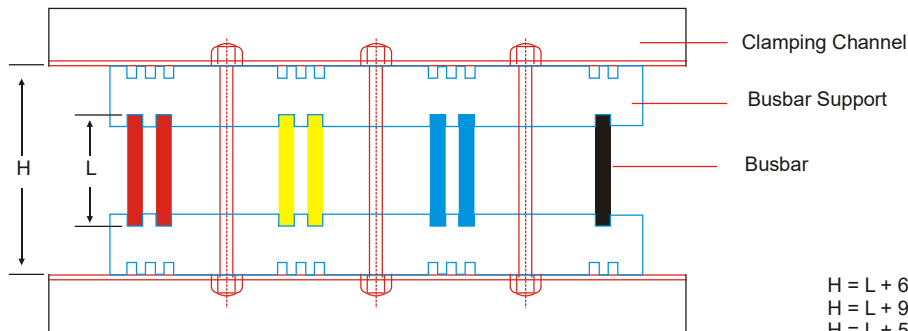
MOUNTING DETAILS



H for GP Series L + 15
H for GPS Series L + 10



H = L + 64mm (for 10p, 11p, 12p, 14p Series)
H = L + 44mm (for 20p, 21p, 22p, 24p Series)



H = L + 64mm (for 30p, 31p, 32p, 42p, 43p, 65p Series)
H = L + 93mm (for 45p Series)
H = L + 54mm (for 60p, 61p, 62p Series)

BUSBAR SUPPORTS

MOUNTING DETAILS

